



December 25, 2025

IGI Report Number **LG758541790**  
CUT CORNERED RECTANGULAR  
MODIFIED BRILLIANT  
LABORATORY GROWN DIAMOND  
**6.94 X 4.74 X 2.88 MM**

Carat Weight **0.89 CARAT**  
Color Grade **FANCY INTENSE PINK**

Clarity Grade **VS 2**

Polish **VERY GOOD**

Symmetry **GOOD**

Fluorescence **SLIGHT**

Inscription(s) **IGI LG758541790**

Comments: This Laboratory Grown Diamond was created by Chemical Vapor Deposition (CVD) growth process. Indications of post-growth treatment.

**LABORATORY GROWN DIAMOND REPORT**

December 25, 2025

IGI Report Number **LG758541790**

Description **LABORATORY GROWN DIAMOND**

Shape and Cutting Style **CUT CORNERED RECTANGULAR MODIFIED  
BRILLIANT**

Measurements **6.94 X 4.74 X 2.88 MM**

**GRADING RESULTS**

Carat Weight **0.89 CARAT**

Color Grade **FANCY INTENSE PINK**

Clarity Grade **VS 2**

**ADDITIONAL GRADING INFORMATION**

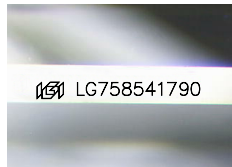
Polish **VERY GOOD**

Symmetry **GOOD**

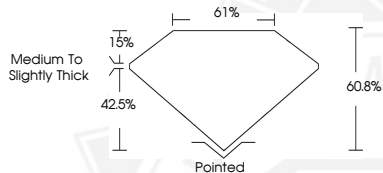
Fluorescence **SLIGHT**

Inscription(s) **IGI LG758541790**

Comments: This Laboratory Grown Diamond was created by Chemical Vapor Deposition (CVD) growth process. Indications of post-growth treatment.



Sample Image Used



December 25, 2025

IGI Report Number **LG758541790**  
CUT CORNERED RECTANGULAR  
MODIFIED BRILLIANT  
LABORATORY GROWN DIAMOND  
**6.94 X 4.74 X 2.88 MM**

Carat Weight **0.89 CARAT**  
Color Grade **FANCY INTENSE PINK**

Clarity Grade **VS 2**

Polish **VERY GOOD**

Symmetry **GOOD**

Fluorescence **SLIGHT**

Inscription(s) **IGI LG758541790**

Comments: This Laboratory Grown Diamond was created by Chemical Vapor Deposition (CVD) growth process. Indications of post-growth treatment.



THIS DOCUMENT WAS PRODUCED WITH THE FOLLOWING SECURITY MEASURES: SPECIAL DOCUMENT PAPER, INK SCREENS, WATERMARK, BACKGROUND DESIGNS, HOLOGRAM AND OTHER SECURITY FEATURES NOT LISTED AND DO EXCEED DOCUMENT SECURITY INDUSTRY GUIDELINES.