



December 25, 2025

IGI Report Number **LG758541779**

**PRINCESS CUT**

**LABORATORY GROWN DIAMOND**

**5.40 X 5.03 X 3.69 MM**

Carat Weight **0.93 CARAT**

Color Grade **FANCY VIVID PINK**

Clarity Grade **VS 2**

Polish **VERY GOOD**

Symmetry **VERY GOOD**

Fluorescence **SLIGHT**

Inscription(s) **IGI LG758541779**

Comments: This Laboratory Grown Diamond was created by Chemical Vapor Deposition (CVD) growth process. Indications of post-growth treatment.

**LABORATORY GROWN DIAMOND REPORT**

December 25, 2025

IGI Report Number

**LG758541779**

Description

**LABORATORY GROWN DIAMOND**

Shape and Cutting Style

**PRINCESS CUT**

Measurements

**5.40 X 5.03 X 3.69 MM**

**GRADING RESULTS**

Carat Weight

**0.93 CARAT**

Color Grade

**FANCY VIVID PINK**

Clarity Grade

**VS 2**

**ADDITIONAL GRADING INFORMATION**

Polish

**VERY GOOD**

Symmetry

**VERY GOOD**

Fluorescence

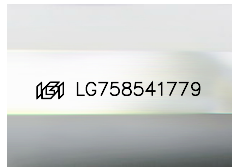
**SLIGHT**

Inscription(s)

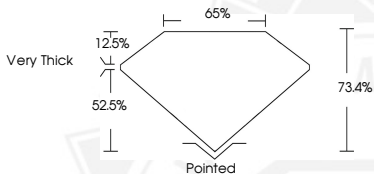
**IGI LG758541779**

Comments: This Laboratory Grown Diamond was created by Chemical Vapor Deposition (CVD) growth process.

Indications of post-growth treatment.



Sample Image Used



December 25, 2025

IGI Report Number **LG758541779**

**PRINCESS CUT**

**LABORATORY GROWN DIAMOND**

**5.40 X 5.03 X 3.69 MM**

Carat Weight **0.93 CARAT**

Color Grade **FANCY VIVID PINK**

Clarity Grade **VS 2**

Polish **VERY GOOD**

Symmetry **VERY GOOD**

Fluorescence **SLIGHT**

Inscription(s) **IGI LG758541779**

Comments: This Laboratory Grown Diamond was created by Chemical Vapor Deposition (CVD) growth process. Indications of post-growth treatment.



THIS DOCUMENT WAS PRODUCED WITH THE FOLLOWING SECURITY MEASURES: SPECIAL DOCUMENT PAPER, INK SCREENS, WATERMARK, BACKGROUND DESIGNS, HOLOGRAM AND OTHER SECURITY FEATURES NOT LISTED AND DO EXCEED DOCUMENT SECURITY INDUSTRY GUIDELINES.