



December 24, 2025

IGI Report Number LG758541754
OVAL MODIFIED BRILLIANT
LABORATORY GROWN DIAMOND
7.28 X 5.80 X 3.65 MM

Carat Weight **0.96 CARAT**
Color Grade **FANCY VIVID PINK**
Clarity Grade **SI 1**
Polish **EXCELLENT**
Symmetry **EXCELLENT**
Fluorescence **SLIGHT**
Inscription(s) **IGI LG758541754**

Comments: This Laboratory Grown Diamond was created by Chemical Vapor Deposition (CVD) growth process. Indications of post-growth treatment.

LABORATORY GROWN DIAMOND REPORT

December 24, 2025
IGI Report Number **LG758541754**
Description **LABORATORY GROWN DIAMOND**
Shape and Cutting Style **OVAL MODIFIED BRILLIANT**
Measurements **7.28 X 5.80 X 3.65 MM**

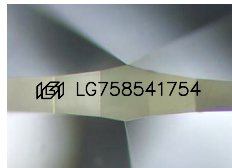
GRADING RESULTS

Carat Weight **0.96 CARAT**
Color Grade **FANCY VIVID PINK**
Clarity Grade **SI 1**

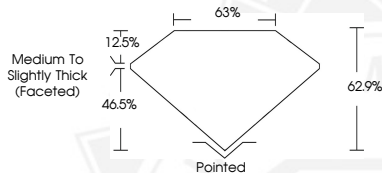
ADDITIONAL GRADING INFORMATION

Polish **EXCELLENT**
Symmetry **EXCELLENT**
Fluorescence **SLIGHT**
Inscription(s) **IGI LG758541754**

Comments: This Laboratory Grown Diamond was created by Chemical Vapor Deposition (CVD) growth process. Indications of post-growth treatment.



Sample Image Used



December 24, 2025

IGI Report Number LG758541754
OVAL MODIFIED BRILLIANT
LABORATORY GROWN DIAMOND
7.28 X 5.80 X 3.65 MM

Carat Weight **0.96 CARAT**
Color Grade **FANCY VIVID PINK**
Clarity Grade **SI 1**
Polish **EXCELLENT**
Symmetry **EXCELLENT**
Fluorescence **SLIGHT**
Inscription(s) **IGI LG758541754**

Comments: This Laboratory Grown Diamond was created by Chemical Vapor Deposition (CVD) growth process. Indications of post-growth treatment.



THIS DOCUMENT WAS PRODUCED WITH THE FOLLOWING SECURITY MEASURES: SPECIAL DOCUMENT PAPER, INK SCREENS, WATERMARK, BACKGROUND DESIGNS, HOLOGRAM AND OTHER SECURITY FEATURES NOT LISTED AND DO EXCEED DOCUMENT SECURITY INDUSTRY GUIDELINES.