



**ELECTRONIC COPY**

LG758540884  
Report verification at igi.org



December 18, 2025

IGI Report Number **LG758540884**

Description **LABORATORY GROWN DIAMOND**

Shape and Cutting Style **ROUND BRILLIANT**

Measurements **11.86 - 11.91 X 7.06 MM**

**GRADING RESULTS**

Carat Weight **6.07 CARATS**

Color Grade **F**

Clarity Grade **VS 2**

Cut Grade **IDEAL**

December 18, 2025  
IGI Report Number **LG758540884**  
Description **LABORATORY GROWN DIAMOND**  
Shape and Cutting Style **ROUND BRILLIANT**  
Measurements **11.86 - 11.91 X 7.06 MM**

**GRADING RESULTS**

Carat Weight **6.07 CARATS**

Color Grade **F**

Clarity Grade **VS 2**

Cut Grade **IDEAL**

**ADDITIONAL GRADING INFORMATION**

Polish **EXCELLENT**

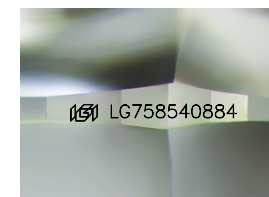
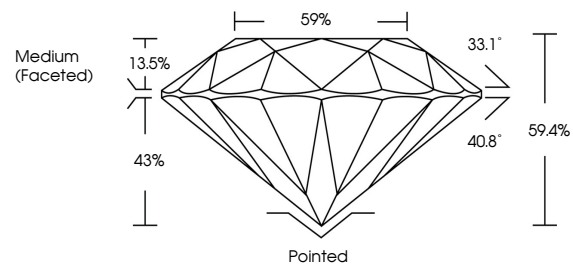
Symmetry **EXCELLENT**

Fluorescence **NONE**

Inscription(s) **LG758540884**

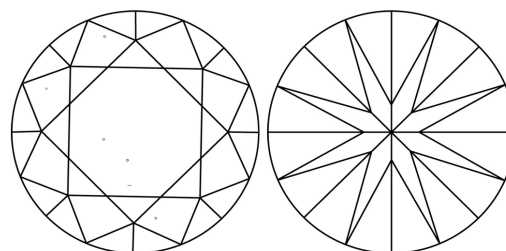
Comments: This Laboratory Grown Diamond was created by Chemical Vapor Deposition (CVD) growth process.  
Type IIa

**PROPORTIONS**



Sample Image Used

**CLARITY CHARACTERISTICS**



**KEY TO SYMBOLS**

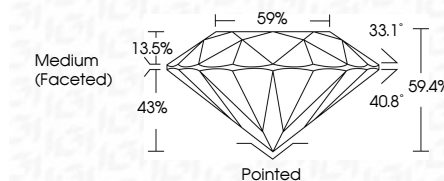
Red symbols indicate internal characteristics.  
Green symbols indicate external characteristics.

**COLOR**

D E F G H I J Faint Very Light Light

**CLARITY**

FL	IF	VS <sup>1-2</sup>	VS <sup>1-2</sup>	SI <sup>1-2</sup>	I <sup>1-3</sup>
Flawless	Internally Flawless	Very Very Slightly Included	Very Slightly Included	Slightly Included	Included



**ADDITIONAL GRADING INFORMATION**

Polish **EXCELLENT**

Symmetry **EXCELLENT**

Fluorescence **NONE**

Inscription(s) **LG758540884**

Comments: This Laboratory Grown Diamond was created by Chemical Vapor Deposition (CVD) growth process.  
Type IIa



**IGI**



December 18, 2025  
IGI Report No **LG758540884**  
**ROUND BRILLIANT**

**11.86 - 11.91 X 7.06 MM**

**6.07 CARATS**

Color Grade **F**

Clarity Grade **VS 2**

Cut Grade **IDEAL**

Depth **59.4%**

Table **59%**

Girdle **Medium (Faceted)**

Culet **Pointed**

Polish **EXCELLENT**

Symmetry **EXCELLENT**

Fluorescence **NONE**

Inscription(s) **LG758540884**

Comments: This Laboratory Grown Diamond was created by Chemical Vapor Deposition (CVD) growth process.  
Type IIa