



ELECTRONIC COPY

LG758539768
Report verification at igi.org



December 29, 2025
IGI Report Number **LG758539768**
Description **LABORATORY GROWN DIAMOND**
Shape and Cutting Style **RECTANGULAR CUSHION MIXED CUT**
Measurements **11.21 X 7.36 X 5.11 MM**
GRADING RESULTS
Carat Weight **4.20 CARATS**
Color Grade **FANCY VIVID BLUE**
Clarity Grade **VVS 1**

LABORATORY GROWN DIAMOND REPORT

December 29, 2025
IGI Report Number **LG758539768**
Description **LABORATORY GROWN DIAMOND**
Shape and Cutting Style **RECTANGULAR CUSHION MIXED CUT**
Measurements **11.21 X 7.36 X 5.11 MM**

GRADING RESULTS

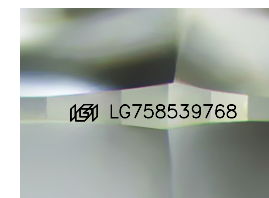
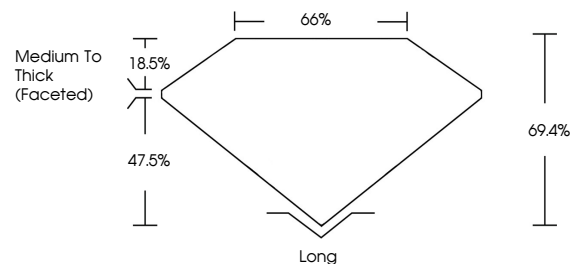
Carat Weight **4.20 CARATS**
Color Grade **FANCY VIVID BLUE**
Clarity Grade **VVS 1**

ADDITIONAL GRADING INFORMATION

Polish **EXCELLENT**
Symmetry **EXCELLENT**
Fluorescence **NONE**
Inscription(s) **IGI LG758539768**

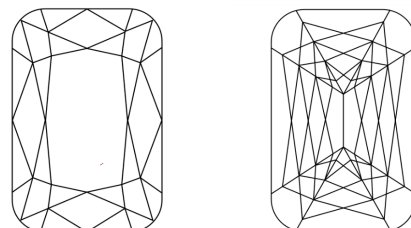
Comments: This Laboratory Grown Diamond was created by Chemical Vapor Deposition (CVD) growth process.
Indications of post-growth treatment.

PROPORTIONS



Sample Image Used

CLARITY CHARACTERISTICS



KEY TO SYMBOLS

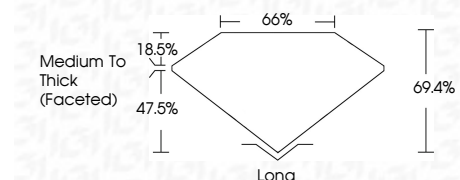
Red symbols indicate internal characteristics.
Green symbols indicate external characteristics.

COLOR

D E F G H I J Faint Very Light Light

CLARITY

FL	IF	VVS ¹⁻²	VS ¹⁻²	SI ¹⁻²	I ¹⁻³
Flawless	Internally Flawless	Very Very Slightly Included	Very Slightly Included	Slightly Included	Included



ADDITIONAL GRADING INFORMATION

Polish **EXCELLENT**
Symmetry **EXCELLENT**
Fluorescence **NONE**
Inscription(s) **IGI LG758539768**
Comments: This Laboratory Grown Diamond was created by Chemical Vapor Deposition (CVD) growth process.
Indications of post-growth treatment.



December 29, 2025
IGI Report No LG758539768
RECTANGULAR CUSHION MIXED CUT
4.20 CARATS
FANCY VIVID BLUE
VVS 1
69.4%
66%
Medium To Thick (Faceted)
Long
EXCELLENT
EXCELLENT
NONE
IGI LG758539768
Comments: This Laboratory Grown Diamond was created by Chemical Vapor Deposition (CVD) growth process.
Indications of post-growth treatment.