



ELECTRONIC COPY

LG758539231
Report verification at igi.org



January 31, 2026

IGI Report Number **LG758539231**

Description **LABORATORY GROWN DIAMOND**

Shape and Cutting Style **TRIANGULAR MIXED CUT**

Measurements **14.16 X 15.28 X 8.14 MM**

GRADING RESULTS

Carat Weight **10.04 CARATS**

Color Grade **F**

Clarity Grade **VS 1**

January 31, 2026
IGI Report Number **LG758539231**
Description **LABORATORY GROWN DIAMOND**
Shape and Cutting Style **TRIANGULAR MIXED CUT**
Measurements **14.16 X 15.28 X 8.14 MM**

GRADING RESULTS

Carat Weight **10.04 CARATS**

Color Grade **F**

Clarity Grade **VS 1**

ADDITIONAL GRADING INFORMATION

Polish **VERY GOOD**

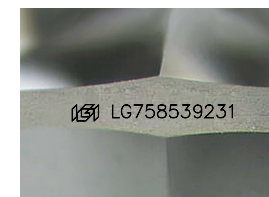
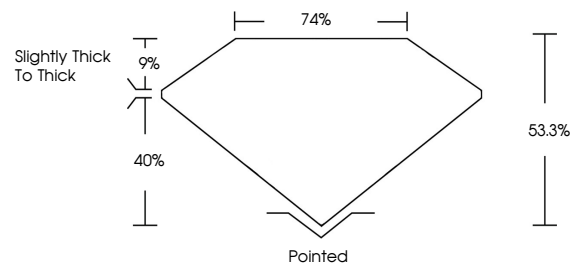
Symmetry **EXCELLENT**

Fluorescence **NONE**

Inscription(s) **IGI LG758539231**

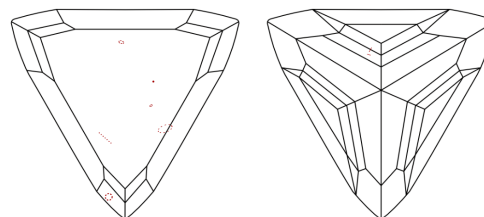
Comments: This Laboratory Grown Diamond was created by Chemical Vapor Deposition (CVD) growth process.
Type IIa

PROPORTIONS



Sample Image Used

CLARITY CHARACTERISTICS



KEY TO SYMBOLS

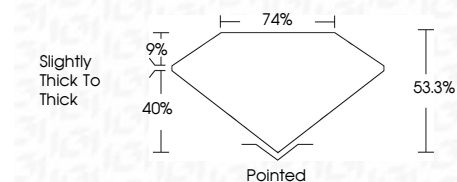
Red symbols indicate internal characteristics.
Green symbols indicate external characteristics.

COLOR

D E F G H I J Faint Very Light Light

CLARITY

FL	IF	VS ¹⁻²	VS ¹⁻²	SI ¹⁻²	I ¹⁻³
Flawless	Internally Flawless	Very Very Slightly Included	Very Slightly Included	Slightly Included	Included



ADDITIONAL GRADING INFORMATION

Polish **VERY GOOD**

Symmetry **EXCELLENT**

Fluorescence **NONE**

Inscription(s) **IGI LG758539231**

Comments: This Laboratory Grown Diamond was created by Chemical Vapor Deposition (CVD) growth process.
Type IIa



IGI



January 31, 2026
IGI Report No LG758539231
TRIANGULAR MIXED CUT
14.16 X 15.28 X 8.14 MM
Carat Weight **10.04 CARATS**
Color Grade **F**
Clarity Grade **VS 1**
Depth **9%**
Table **74%**
Girdle **Slightly thick to thick**
Culet **Pointed**
Polish **VERY GOOD**
Symmetry **EXCELLENT**
Fluorescence **NONE**
Inscription(s) **IGI LG758539231**
Comments: This Laboratory Grown Diamond was created by Chemical Vapor Deposition (CVD) growth process.
Type IIa