



ELECTRONIC COPY

LABORATORY GROWN DIAMOND REPORT

December 19, 2025	
IGI Report Number	LG758538548
Description	LABORATORY GROWN DIAMOND
Shape and Cutting Style	HEXAGONAL MODIFIED BRILLIANT
Measurements	9.32 X 7.96 X 5.31 MM

GRADING RESULTS

Carat Weight	2.50 CARATS
Color Grade	D
Clarity Grade	VS 1

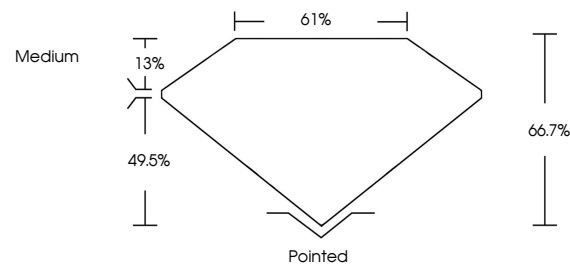
ADDITIONAL GRADING INFORMATION

Polish	EXCELLENT
Symmetry	EXCELLENT
Fluorescence	NONE
Inscription(s)	 LG758538548

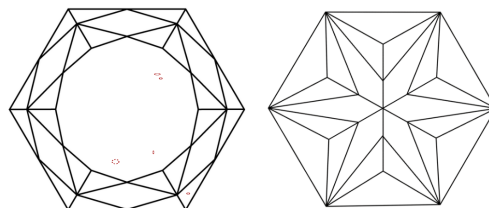
Comments: This Laboratory Grown Diamond was created by Chemical Vapor Deposition (CVD) growth process.
Type IIa

LG758538548
Report verification at igi.org

PROPORTIONS

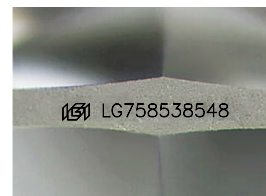


CLARITY CHARACTERISTICS



KEY TO SYMBOLS

Red symbols indicate internal characteristics.
Green symbols indicate external characteristics.



Sample Image Used

COLOR

D E F G H I J Faint Very Light Light

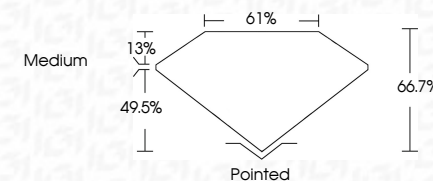
CLARITY

FL	IF	VVS ¹⁻²	VS ¹⁻²	SI ¹⁻²	I ¹⁻³
Flawless	Internally Flawless	Very Very Slightly Included	Very Slightly Included	Slightly Included	Included

LABORATORY GROWN DIAMOND REPORT



December 19, 2025	
IGI Report Number	LG758538548
Description	LABORATORY GROWN DIAMOND
Shape and Cutting Style	HEXAGONAL MODIFIED BRILLIANT
Measurements	9.32 X 7.96 X 5.31 MM
GRADING RESULTS	
Carat Weight	2.50 CARATS
Color Grade	D
Clarity Grade	VS 1



ADDITIONAL GRADING INFORMATION

Polish	EXCELLENT
Symmetry	EXCELLENT
Fluorescence	NONE
Inscription(s)	 LG758538548
Comments: This Laboratory Grown Diamond was created by Chemical Vapor Deposition (CVD) growth process.	
Type IIa	



© IGI 2020, International Gemological Institute

FD - 10 20



THIS DOCUMENT WAS PRODUCED WITH THE FOLLOWING SECURITY MEASURES: SPECIAL DOCUMENT PAPER, INK SCREENS, WATERMARK, BACKGROUND DESIGNS, HOLOGRAM AND OTHER SECURITY FEATURES NOT LISTED AND DO EXCEED DOCUMENT SECURITY INDUSTRY GUIDELINES

www.igi.org

December 19, 2025
GI Report No LG758538548
HEXAGONAL MODIFIED BRILLIANT

3.92 X 7.96 X 5.31 MM	2.50 CARATS	D
Carat Weight		VS 1
Color Grade		66.7%
		61%
		Medium
		Pointed
		EXCELLENT
		EXCELLENT
		NONE
		4mm / 17.7mm x 5.3mm

Comments:
This Laboratory Grown Diamond was created by Chemical Vapor Deposition (CVD) growth process.