

ELECTRONIC COPY

LABORATORY GROWN DIAMOND REPORT

December 29, 2025	
IGI Report Number	LG758536917
Description	LABORATORY GROWN DIAMOND
Shape and Cutting Style	ROUND BRILLIANT
Measurements	7.99 - 8.14 X 4.85 MM

GRADING RESULTS

Carat Weight	1.97 CARAT
Color Grade	M
Clarity Grade	VS 2
Cut Grade	VERY GOOD

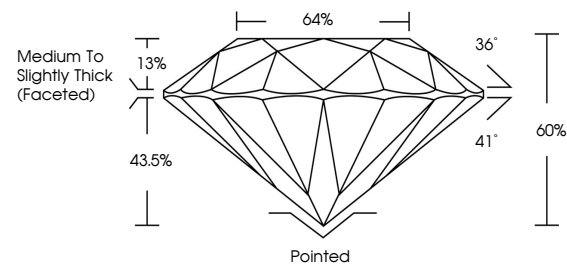
ADDITIONAL GRADING INFORMATION

Polish	VERY GOOD
Symmetry	VERY GOOD
Fluorescence	NONE
Inscription(s)	 LG758536917

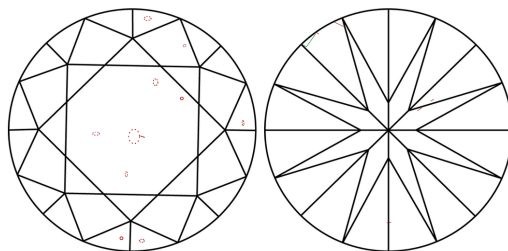
Comments: This Laboratory Grown Diamond was created by Chemical Vapor Deposition (CVD) growth process.
Type IIa
Faint Brown

LG758536917
Report verification at igi.org

PROPORTIONS

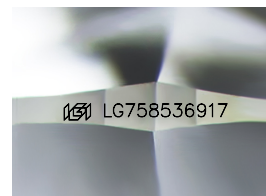


CLARITY CHARACTERISTICS



KEY TO SYMBOLS

Red symbols indicate internal characteristics.
Green symbols indicate external characteristics.



Sample Image Used

COLOR

D E F G H I J Faint Very Light Light

CLARITY

FL	IF	VVS ¹⁻²	VS ¹⁻²	SI ¹⁻²	I ¹⁻³
Flawless	Internally Flawless	Very Very Slightly Included	Very Slightly Included	Slightly Included	Included

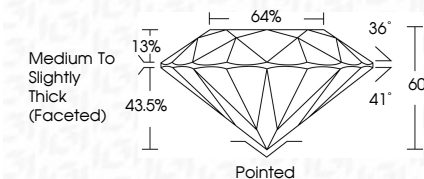
LABORATORY GROWN DIAMOND REPORT



December 29, 2025	
IGI Report Number	LG758536917
Description	LABORATORY GROWN DIAMOND
Shape and Cutting Style	ROUND BRILLIANT
Measurements	7.99 - 8.14 X 4.85 MM

GRADING RESULTS

Carat Weight	1.97 CARAT
Color Grade	M
Clarity Grade	VS 2
Cut Grade	VERY GOOD



ADDITIONAL GRADING INFORMATION

Polish	VERY GOOD
Symmetry	VERY GOOD
Fluorescence	NONE
Inscription(s)	 LG758536917
Comments: This Laboratory Grown Diamond was created by Chemical Vapor Deposition (CVD) growth process.	
Type IIa	
Faint Brown	



IG



© IGI 2020, International Gemological Institute

FD - 10 20

December 29, 2025
IGI Report No LG758536917
ROUND BRILLIANT

7.99 - 8.14 X 4.85 MM	Carat Weight	1.97 CARAT
	Color Grade	M
	Clarity Grade	VS 2
	Cut Grade	VERY GOOD
	Depth	60%
	Table	64%
	Girdle	Medium To Slightly Thick (Faceted)
	Culet	Pointed
	Polish	VERY GOOD
	Symmetry	VERY GOOD
	Fluorescence	NONE

Comments:
This Laboratory Grown Diamond was created by Chemical Vapor Deposition (CVD) growth process.
Type Ila