



ELECTRONIC COPY

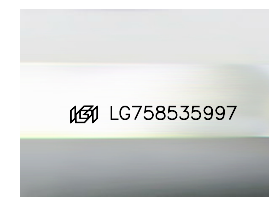
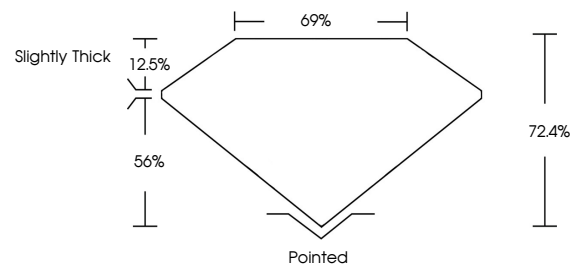
LG758535997
Report verification at igi.org



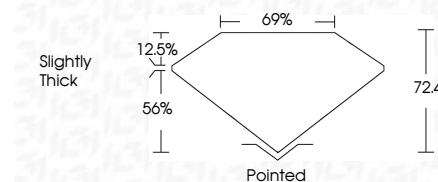
December 18, 2025
IGI Report Number **LG758535997**
Description **LABORATORY GROWN DIAMOND**
Shape and Cutting Style **PRINCESS CUT**
Measurements **9.04 X 8.84 X 6.40 MM**
GRADING RESULTS
Carat Weight **4.51 CARATS**
Color Grade **G**
Clarity Grade **VVS 2**

December 18, 2025
IGI Report Number **LG758535997**
Description **LABORATORY GROWN DIAMOND**
Shape and Cutting Style **PRINCESS CUT**
Measurements **9.04 X 8.84 X 6.40 MM**
GRADING RESULTS
Carat Weight **4.51 CARATS**
Color Grade **G**
Clarity Grade **VVS 2**

PROPORTIONS



Sample Image Used



ADDITIONAL GRADING INFORMATION

Polish **EXCELLENT**
Symmetry **EXCELLENT**
Fluorescence **NONE**
Inscription(s) **IGI LG758535997**

Comments: This Laboratory Grown Diamond was created by Chemical Vapor Deposition (CVD) growth process. Type IIa

ADDITIONAL GRADING INFORMATION

Polish **EXCELLENT**
Symmetry **EXCELLENT**
Fluorescence **NONE**
Inscription(s) **IGI LG758535997**

Comments: This Laboratory Grown Diamond was created by Chemical Vapor Deposition (CVD) growth process. Type IIa

COLOR

D E F G H I J Faint Very Light Light

CLARITY

FL	IF	VVS ¹⁻²	VS ¹⁻²	SI ¹⁻²	I ¹⁻³
Flawless	Internally Flawless	Very Very Slightly Included	Very Slightly Included	Slightly Included	Included



IGI



December 18, 2025
IGI Report No. **LG758535997**
PRINCESS CUT
9.04 X 8.84 X 6.40 MM
Carat Weight **4.51 CARATS**
Color Grade **G**
Clarity Grade **VVS 2**
Table **72.4%**
Depth **69%**
Girdle **Slightly Thick**
Culet **Pointed**
Polish **EXCELLENT**
Symmetry **EXCELLENT**
Fluorescence **NONE**
Inscription(s) **IGI LG758535997**
Comments: This Laboratory Grown Diamond was created by Chemical Vapor Deposition (CVD) growth process. Type IIa