



# INTERNATIONAL GEMOLOGICAL INSTITUTE

## LABORATORY GROWN DIAMOND REPORT

December 22, 2025  
 IGI Report Number **LG758531858**  
 Description **LABORATORY GROWN DIAMOND**  
 Shape and Cutting Style **ROUND BRILLIANT**  
 Measurements **6.23 - 6.27 X 3.79 MM**

### GRADING RESULTS

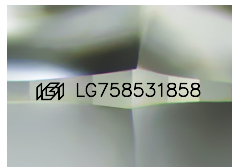
Carat Weight **0.92 CARAT**  
 Color Grade **D**  
 Clarity Grade **VS 2**  
 Cut Grade **EXCELLENT**

### ADDITIONAL GRADING INFORMATION

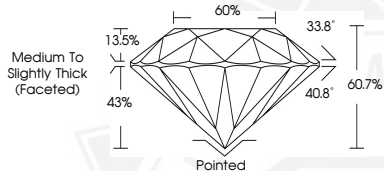
Polish **EXCELLENT**  
 Symmetry **EXCELLENT**  
 Fluorescence **NONE**  
 Inscription(s) **IGI LG758531858**

Comments: As Grown - No indication of post-growth treatment. This Laboratory Grown Diamond was created by High Pressure High Temperature (HPHT) growth process. Type II

ELECTRONIC COPY



Sample Image Used



December 22, 2025  
 IGI Report Number **LG758531858**  
 ROUND BRILLIANT  
 LABORATORY GROWN DIAMOND  
 6.23 - 6.27 X 3.79 MM  
 Carat Weight **0.92 CARAT**  
 Color Grade **D**  
 Clarity Grade **VS 2**  
 Cut Grade **EXCELLENT**  
 Polish **EXCELLENT**  
 Symmetry **EXCELLENT**  
 Fluorescence **NONE**  
 Inscription(s) **IGI LG758531858**

Comments: As Grown - No indication of post-growth treatment. This Laboratory Grown Diamond was created by High Pressure High Temperature (HPHT) growth process. Type II



December 22, 2025  
 IGI Report Number **LG758531858**  
 ROUND BRILLIANT  
 LABORATORY GROWN DIAMOND  
 6.23 - 6.27 X 3.79 MM  
 Carat Weight **0.92 CARAT**  
 Color Grade **D**  
 Clarity Grade **VS 2**  
 Cut Grade **EXCELLENT**  
 Polish **EXCELLENT**  
 Symmetry **EXCELLENT**  
 Fluorescence **NONE**  
 Inscription(s) **IGI LG758531858**

Comments: As Grown - No indication of post-growth treatment. This Laboratory Grown Diamond was created by High Pressure High Temperature (HPHT) growth process. Type II



THIS DOCUMENT WAS PRODUCED WITH THE FOLLOWING SECURITY MEASURES: SPECIAL DOCUMENT PAPER, INK SCREENS, WATERMARK, BACKGROUND DESIGNS, HOLOGRAM AND OTHER SECURITY FEATURES NOT LISTED AND DO EXCEED DOCUMENT SECURITY INDUSTRY GUIDELINES.

For terms & conditions and to verify this report, please visit [www.igi.org](http://www.igi.org)