



January 2, 2026

**IGI Report Number** LG758529723  
**HALF MOON BRILLIANT**  
**LABORATORY GROWN DIAMOND**  
**6.92 X 4.29 X 2.65 MM**

**Carat Weight** 0.54 CARAT  
**Color Grade** E  
**Clarity Grade** VVS 2  
**Polish** VERY GOOD  
**Symmetry** EXCELLENT  
**Fluorescence** NONE  
**Inscription(s)** IGI LG758529723

Comments: This Laboratory Grown Diamond was created by Chemical Vapor Deposition (CVD) growth process. Type IIa

**LABORATORY GROWN DIAMOND REPORT**

January 2, 2026  
IGI Report Number **LG758529723**  
Description **LABORATORY GROWN DIAMOND**  
Shape and Cutting Style **HALF MOON BRILLIANT**  
Measurements **6.92 X 4.29 X 2.65 MM**

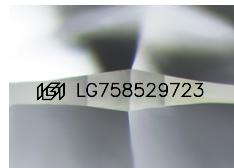
**GRADING RESULTS**

**Carat Weight** 0.54 CARAT  
**Color Grade** E  
**Clarity Grade** VVS 2

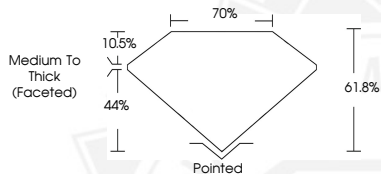
**ADDITIONAL GRADING INFORMATION**

**Polish** VERY GOOD  
**Symmetry** EXCELLENT  
**Fluorescence** NONE  
**Inscription(s)** IGI LG758529723

Comments: This Laboratory Grown Diamond was created by Chemical Vapor Deposition (CVD) growth process. Type IIa



Sample Image Used



January 2, 2026

**IGI Report Number** LG758529723  
**HALF MOON BRILLIANT**  
**LABORATORY GROWN DIAMOND**  
**6.92 X 4.29 X 2.65 MM**

**Carat Weight** 0.54 CARAT  
**Color Grade** E  
**Clarity Grade** VVS 2  
**Polish** VERY GOOD  
**Symmetry** EXCELLENT  
**Fluorescence** NONE  
**Inscription(s)** IGI LG758529723

Comments: This Laboratory Grown Diamond was created by Chemical Vapor Deposition (CVD) growth process. Type IIa



THIS DOCUMENT WAS PRODUCED WITH THE FOLLOWING SECURITY MEASURES: SPECIAL DOCUMENT PAPER, INK SCREENS, WATERMARK, BACKGROUND DESIGNS, HOLOGRAM AND OTHER SECURITY FEATURES NOT LISTED AND DO EXCEED DOCUMENT SECURITY INDUSTRY GUIDELINES.