



INTERNATIONAL GEMOLOGICAL INSTITUTE

ELECTRONIC COPY



December 30, 2025

IGI Report Number LG758529640

ROUND BRILLIANT

LABORATORY GROWN DIAMOND

4.98 - 5.01 X 3.02 MM

Carat Weight 0.45 CARAT

Color Grade D

Clarity Grade VVS 2

Cut Grade EXCELLENT

Polish EXCELLENT

Symmetry EXCELLENT

Fluorescence NONE

Inscription(s) IGI LG758529640

Comments: This Laboratory Grown Diamond was created by Chemical Vapor Deposition (CVD) growth process. Type IIa

LABORATORY GROWN DIAMOND REPORT

December 30, 2025

IGI Report Number LG758529640

Description LABORATORY GROWN DIAMOND

Shape and Cutting Style ROUND BRILLIANT

Measurements 4.98 - 5.01 X 3.02 MM

GRADING RESULTS

Carat Weight 0.45 CARAT

Color Grade D

Clarity Grade VVS 2

Cut Grade EXCELLENT

ADDITIONAL GRADING INFORMATION

Polish EXCELLENT

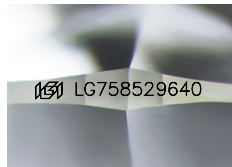
Symmetry EXCELLENT

Fluorescence NONE

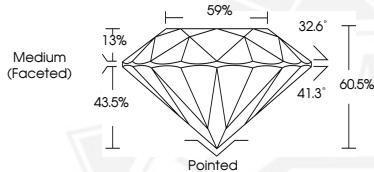
Inscription(s) IGI LG758529640

Comments: This Laboratory Grown Diamond was created by Chemical Vapor Deposition (CVD) growth process.

Type IIa



Sample Image Used



December 30, 2025

IGI Report Number LG758529640

ROUND BRILLIANT

LABORATORY GROWN DIAMOND

4.98 - 5.01 X 3.02 MM

Carat Weight 0.45 CARAT

Color Grade D

Clarity Grade VVS 2

Cut Grade EXCELLENT

Polish EXCELLENT

Symmetry EXCELLENT

Fluorescence NONE

Inscription(s) IGI LG758529640

Comments: This Laboratory Grown Diamond was created by Chemical Vapor Deposition (CVD) growth process. Type IIa



THIS DOCUMENT WAS PRODUCED WITH THE FOLLOWING SECURITY MEASURES: SPECIAL DOCUMENT PAPER, INK SCREENS, WATERMARK, BACKGROUND DESIGNS, HOLOGRAM AND OTHER SECURITY FEATURES NOT LISTED AND DO EXCEED DOCUMENT SECURITY INDUSTRY GUIDELINES.

For terms & conditions and to verify this report, please visit www.igi.org