



December 25, 2025

IGI Report Number **LG758529420**

ROUND BRILLIANT

LABORATORY GROWN DIAMOND

5.32 - 5.35 X 3.27 MM

Carat Weight **0.57 CARAT**

Color Grade **D**

Clarity Grade **VS 1**

Cut Grade **IDEAL**

Polish **EXCELLENT**

Symmetry **EXCELLENT**

Fluorescence **NONE**

Inscription(s) **IGI LG758529420**

Comments: This Laboratory Grown Diamond was created by Chemical Vapor Deposition (CVD) growth process. Type IIa

LABORATORY GROWN DIAMOND REPORT

December 25, 2025

IGI Report Number **LG758529420**

Description **LABORATORY GROWN DIAMOND**

Shape and Cutting Style **ROUND BRILLIANT**

Measurements **5.32 - 5.35 X 3.27 MM**

GRADING RESULTS

Carat Weight **0.57 CARAT**

Color Grade **D**

Clarity Grade **VS 1**

Cut Grade **IDEAL**

ADDITIONAL GRADING INFORMATION

Polish **EXCELLENT**

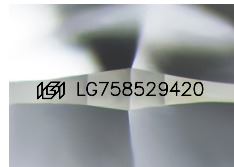
Symmetry **EXCELLENT**

Fluorescence **NONE**

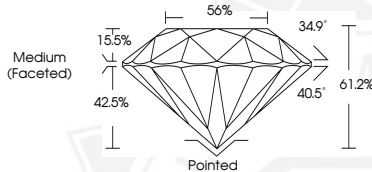
Inscription(s) **IGI LG758529420**

Comments: This Laboratory Grown Diamond was created by Chemical Vapor Deposition (CVD) growth process.

Type IIa



Sample Image Used



December 25, 2025

IGI Report Number **LG758529420**

ROUND BRILLIANT

LABORATORY GROWN DIAMOND

5.32 - 5.35 X 3.27 MM

Carat Weight **0.57 CARAT**

Color Grade **D**

Clarity Grade **VS 1**

Cut Grade **IDEAL**

Polish **EXCELLENT**

Symmetry **EXCELLENT**

Fluorescence **NONE**

Inscription(s) **IGI LG758529420**

Comments: This Laboratory Grown Diamond was created by Chemical Vapor Deposition (CVD) growth process. Type IIa



THIS DOCUMENT WAS PRODUCED WITH THE FOLLOWING SECURITY MEASURES: SPECIAL DOCUMENT PAPER, INK SCREENS, WATERMARK, BACKGROUND DESIGNS, HOLOGRAM AND OTHER SECURITY FEATURES NOT LISTED AND DO EXCEED DOCUMENT SECURITY INDUSTRY GUIDELINES.