



ELECTRONIC COPY

LG758528769
Report verification at igi.org



December 17, 2025
IGI Report Number **LG758528769**
Description **LABORATORY GROWN DIAMOND**
Shape and Cutting Style **EMERALD CUT**
Measurements **16.09 X 10.67 X 7.02 MM**
GRADING RESULTS
Carat Weight **12.04 CARATS**
Color Grade **F**
Clarity Grade **VVS 2**

December 17, 2025
IGI Report Number **LG758528769**
Description **LABORATORY GROWN DIAMOND**
Shape and Cutting Style **EMERALD CUT**
Measurements **16.09 X 10.67 X 7.02 MM**

GRADING RESULTS

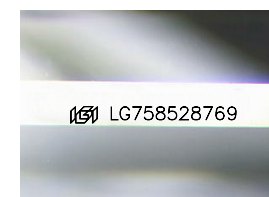
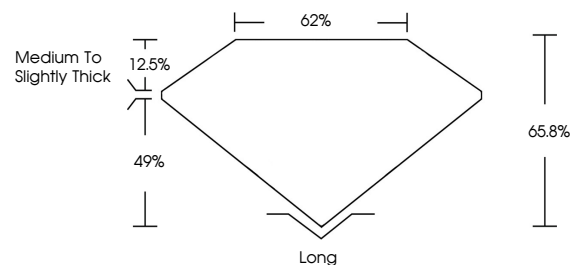
Carat Weight **12.04 CARATS**
Color Grade **F**
Clarity Grade **VVS 2**

ADDITIONAL GRADING INFORMATION

Polish **EXCELLENT**
Symmetry **EXCELLENT**
Fluorescence **NONE**
Inscription(s) **IGI LG758528769**

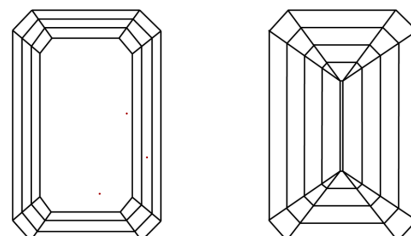
Comments: This Laboratory Grown Diamond was created by Chemical Vapor Deposition (CVD) growth process. Type IIa

PROPORTIONS



Sample Image Used

CLARITY CHARACTERISTICS



KEY TO SYMBOLS

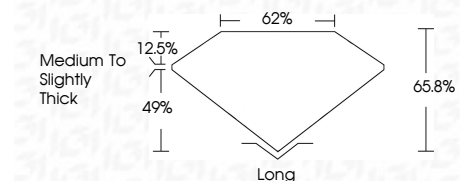
Red symbols indicate internal characteristics.
Green symbols indicate external characteristics.

COLOR

D E F G H I J Faint Very Light Light

CLARITY

FL	IF	VVS ¹⁻²	VS ¹⁻²	SI ¹⁻²	I ¹⁻³
Flawless	Internally Flawless	Very Very Slightly Included	Very Slightly Included	Slightly Included	Included



ADDITIONAL GRADING INFORMATION

Polish **EXCELLENT**
Symmetry **EXCELLENT**
Fluorescence **NONE**
Inscription(s) **IGI LG758528769**
Comments: This Laboratory Grown Diamond was created by Chemical Vapor Deposition (CVD) growth process. Type IIa



December 17, 2025
IGI Report No LG758528769
EMERALD CUT
16.09 X 10.67 X 7.02 MM
12.04 CARATS
F
Color Grade
VVS 2
65.8%
62%
Medium to Slightly Thick
Long
EXCELLENT
EXCELLENT
NONE
IGI LG758528769
Comments: This Laboratory Grown Diamond was created by Chemical Vapor Deposition (CVD) growth process. Type IIa