



**INTERNATIONAL
GEMOLOGICAL
INSTITUTE**

ELECTRONIC COPY

LG758527574
Report verification at igi.org

LABORATORY GROWN DIAMOND REPORT



January 2, 2026

IGI Report Number **LG758527574**

Description	LABORATORY GROWN DIAMOND
-------------	--------------------------

Shape and Cutting Style **PEAR BRILLIANT**

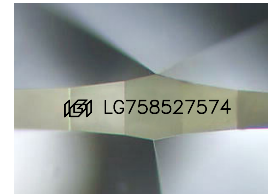
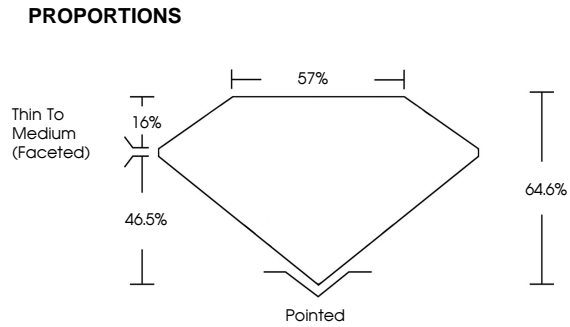
Measurements 10.47 X 6.28 X 4.06 MM

GRADING RESULTS

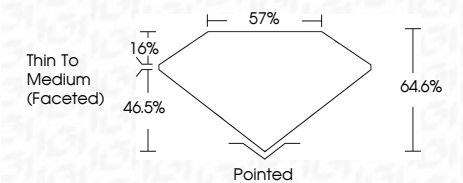
Carat Weight **1.54 CARAT**

Color Grade	F
-------------	---

Clarity Grade VS 1



Sample Image Used



COLOR

D E F G H I J Faint Very Light Light

CLARITY

FL IF VWS¹⁻² VS¹⁻² SI¹⁻² I¹⁻³

Flawless	Internally Flawless	Very Slightly Included	Very Slightly Included	Slightly Included	Included
----------	---------------------	------------------------	------------------------	-------------------	----------



© IGI 2020, International Gemological Institute

FD - 10 20



THIS DOCUMENT WAS PRODUCED WITH THE FOLLOWING SECURITY MEASURES: SPECIAL DOCUMENT PAPER, INK SCREENS, WATERMARK, BACKGROUND DESIGNS, HOLOGRAM AND OTHER SECURITY FEATURES NOT LISTED AND DO EXCEED DOCUMENT SECURITY INDUSTRY GUIDELINES



IGI

January 2, 2026	IGI Report No. IGI76827674	1.54 CARAT F
PEARL BRILLIANT	10.47 X 6.28 X 4.06 MM	VS 1 64.6% 57%
Color Grade	Clarity Grade	Thin to Medium (Faceted)
Depth	Table	Polished EXCELLENT
Girdle	Culet	Symmetry EXCELLENT
	Polish	Fluorescence NONE
		Inscription(s)
		IGI76827674
Comments: As Grown - No indication of post-growth treatment. This Laboratory Grown Diamond was created by High Pressure High Temperature (HPHT) growth process.		
Type II		

As Grown - No indication of post-growth treatment
This Laboratory Grown Diamond was created by High Pressure High Temperature (HPHT) growth process.
Type II