



ELECTRONIC COPY

LG758524286 Report verification at igi.org



December 19, 2025

IGI Report Number LG758524286

Description LABORATORY GROWN DIAMOND

Shape and Cutting Style CUT CORNERED RECTANGULAR MODIFIED BRILLIANT

Measurements 9.79 X 7.12 X 4.85 MM

GRADING RESULTS

Carat Weight 2.93 CARATS

Color Grade E

Clarity Grade VS 1

December 19, 2025 IGI Report Number LG758524286 Description LABORATORY GROWN DIAMOND Shape and Cutting Style CUT CORNERED RECTANGULAR MODIFIED BRILLIANT Measurements 9.79 X 7.12 X 4.85 MM

GRADING RESULTS

Carat Weight 2.93 CARATS

Color Grade E

Clarity Grade VS 1

ADDITIONAL GRADING INFORMATION

Polish EXCELLENT

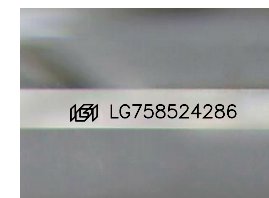
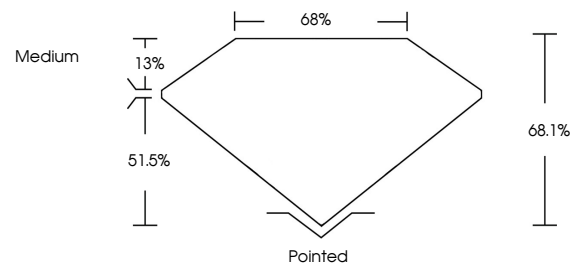
Symmetry EXCELLENT

Fluorescence NONE

Inscription(s) IGI LG758524286

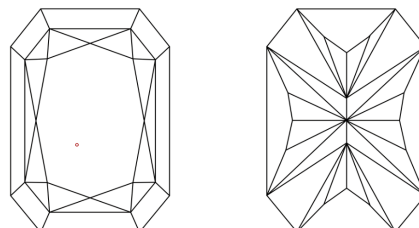
Comments: This Laboratory Grown Diamond was created by Chemical Vapor Deposition (CVD) growth process. Type IIa

PROPORTIONS



Sample Image Used

CLARITY CHARACTERISTICS



KEY TO SYMBOLS

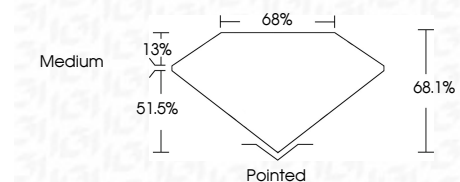
Red symbols indicate internal characteristics. Green symbols indicate external characteristics.

COLOR

D E F G H I J Faint Very Light Light

CLARITY

FL IF VS 1-2 VS 2-2 SI 1-2 I 1-3 Flawless Internally Flawless Very Very Slightly Included Very Slightly Included Slightly Included Included



ADDITIONAL GRADING INFORMATION

Polish EXCELLENT

Symmetry EXCELLENT

Fluorescence NONE

Inscription(s) IGI LG758524286

Comments: This Laboratory Grown Diamond was created by Chemical Vapor Deposition (CVD) growth process. Type IIa



December 19, 2025 IGI Report No LG758524286 CUT CORNERED RECT. MODIFIED BRILLIANT 2.93 CARATS E VS 1 68.1% 68% Medium Pointed EXCELLENT EXCELLENT NONE IGI LG758524286 Comments: This Laboratory Grown Diamond was created by Chemical Vapor Deposition (CVD) growth process. Type IIa