

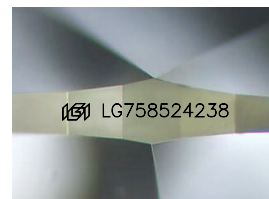
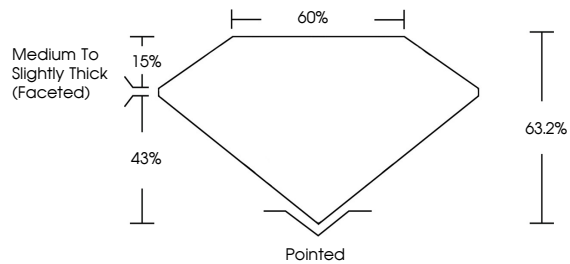


**INTERNATIONAL
GEMOLOGICAL
INSTITUTE**

ELECTRONIC COPY

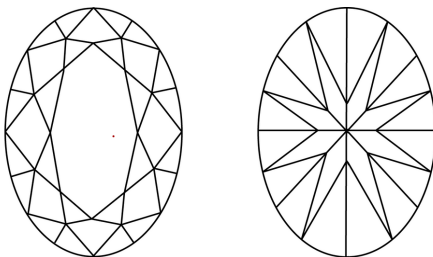
LG758524238
Report verification at igi.org

PROPORTIONS



Sample Image Used

CLARITY CHARACTERISTICS



KEY TO SYMBOLS

Red symbols indicate internal characteristics.
Green symbols indicate external characteristics.

COLOR

D E F G H I J Faint Very Light Light

CLARITY

FL IF WS¹⁻² VS¹⁻² SI¹⁻² I¹⁻³

| | | | | | |
|----------|---------------------|-----------------------------|------------------------|-------------------|----------|
| Flawless | Internally Flawless | Very Very Slightly Included | Very Slightly Included | Slightly Included | Included |
|----------|---------------------|-----------------------------|------------------------|-------------------|----------|

LABORATORY GROWN DIAMOND REPORT



December 19, 2025

IGI Report Number **LG758524238**

| | |
|-------------|--------------------------|
| Description | LABORATORY GROWN DIAMOND |
|-------------|--------------------------|

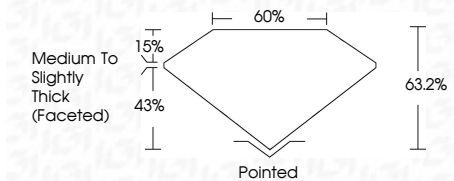
Shape and Cutting Style **OVAL BRILLIANT**

Measurements 10.59 X 7.69 X 4.86 MM

GRADING RESULTS

Carat Weight **2.56 CARATS**

| | |
|-------------|---|
| Color Grade | F |
|-------------|---|

Clarity Grade **VVS 2**

ADDITIONAL GRADING INFORMATION

Polish **EXCELLENT**Symmetry **EXCELLENT**Fluorescence **NONE**Inscription(s) LG75852423

Comments: This Laboratory Grown Diamond was created by Chemical Vapor Deposition (CVD) growth process.
Type IIa



IG



© IGI 2020, International Gemological Institute

FD - 10 20

www.igi.org

THIS DOCUMENT WAS PRODUCED WITH THE FOLLOWING SECURITY MEASURES: SPECIAL DOCUMENT PAPER, INK SCREENS, WATERMARK, BACKGROUND DESIGNS, HOLOGRAM AND OTHER SECURITY FEATURES NOT LISTED AND DO EXCEED DOCUMENT SECURITY INDUSTRY GUIDELINES

December 19, 2025
IGI Report No LG758524238
OVAL BRILLIANT

| | | |
|------------------------|-------------------|-------------------------------------|
| 10.59 X 7.69 X 4.86 MM | Carat Weight | 2.56 CARATS |
| | Color Grade | F |
| | Clarity Grade | VVS 2 |
| | Depth | 63.2% |
| | Table | 60% |
| | Girdle | Medium To Slightly Thick (rastered) |
| | Culet | Pointed |
| | Polish | EXCELLENT |
| | Symmetry | EXCELLENT |
| | Fluorescence | NONE |
| | Measurements (mm) | 4.81 (7.69x10.59) |

Comments:
This Laboratory Grown Diamond was created by Chemical Vapor Deposition (CVD) growth process.