



INTERNATIONAL GEMOLOGICAL INSTITUTE

ELECTRONIC COPY

LABORATORY GROWN DIAMOND REPORT

December 29, 2025
IGI Report Number **LG758523719**
Description **LABORATORY GROWN DIAMOND**
Shape and Cutting Style **PRINCESS CUT**
Measurements **2.91 X 2.88 X 2.10 MM**

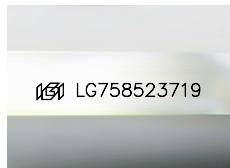
GRADING RESULTS

Carat Weight **0.15 CARAT**
Color Grade **FANCY INTENSE PINK**
Clarity Grade **VVS 2**

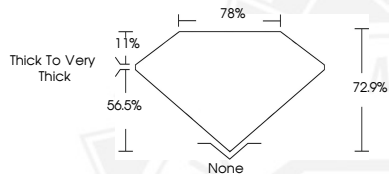
ADDITIONAL GRADING INFORMATION

Polish **VERY GOOD**
Symmetry **GOOD**
Fluorescence **SLIGHT**
Inscription(s) **IGI LG758523719**

Comments: This Laboratory Grown Diamond was created by Chemical Vapor Deposition (CVD) growth process. Indications of post-growth treatment.



Sample Image Used



December 29, 2025
IGI Report Number **LG758523719**
PRINCESS CUT
LABORATORY GROWN DIAMOND
2.91 X 2.88 X 2.10 MM
Carat Weight **0.15 CARAT**
Color Grade **FANCY INTENSE PINK**
Clarity Grade **VVS 2**
Polish **VERY GOOD**
Symmetry **GOOD**
Fluorescence **SLIGHT**
Inscription(s) **IGI LG758523719**

Comments: This Laboratory Grown Diamond was created by Chemical Vapor Deposition (CVD) growth process. Indications of post-growth treatment.



December 29, 2025
IGI Report Number **LG758523719**
PRINCESS CUT
LABORATORY GROWN DIAMOND
2.91 X 2.88 X 2.10 MM
Carat Weight **0.15 CARAT**
Color Grade **FANCY INTENSE PINK**
Clarity Grade **VVS 2**
Polish **VERY GOOD**
Symmetry **GOOD**
Fluorescence **SLIGHT**
Inscription(s) **IGI LG758523719**

Comments: This Laboratory Grown Diamond was created by Chemical Vapor Deposition (CVD) growth process. Indications of post-growth treatment.



THIS DOCUMENT WAS PRODUCED WITH THE FOLLOWING SECURITY MEASURES: SPECIAL DOCUMENT PAPER, INK SCREENS, WATERMARK, BACKGROUND DESIGNS, HOLOGRAM AND OTHER SECURITY FEATURES NOT LISTED AND DO EXCEED DOCUMENT SECURITY INDUSTRY GUIDELINES.

For terms & conditions and to verify this report, please visit www.igi.org