



INTERNATIONAL GEMOLOGICAL INSTITUTE

ELECTRONIC COPY

LABORATORY GROWN DIAMOND REPORT

December 29, 2025
IGI Report Number **LG758523717**
Description **LABORATORY GROWN DIAMOND**
Shape and Cutting Style **PRINCESS CUT**
Measurements **3.00 X 2.93 X 2.02 MM**

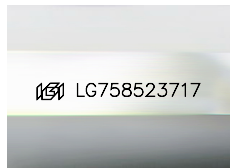
GRADING RESULTS

Carat Weight **0.16 CARAT**
Color Grade **FANCY INTENSE BROWNISH PINK**
Clarity Grade **SI 1**

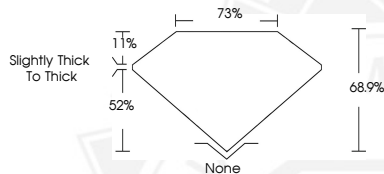
ADDITIONAL GRADING INFORMATION

Polish **VERY GOOD**
Symmetry **GOOD**
Fluorescence **SLIGHT**
Inscription(s) **IGI LG758523717**

Comments: This Laboratory Grown Diamond was created by Chemical Vapor Deposition (CVD) growth process. Indications of post-growth treatment.



Sample Image Used



December 29, 2025

IGI Report Number **LG758523717**

PRINCESS CUT

LABORATORY GROWN DIAMOND

3.00 X 2.93 X 2.02 MM

Carat Weight **0.16 CARAT**

Color Grade **FANCY INTENSE BROWNISH PINK**

Clarity Grade **SI 1**

Polish **VERY GOOD**

Symmetry **GOOD**

Fluorescence **SLIGHT**

Inscription(s) **IGI LG758523717**

Comments: This Laboratory Grown Diamond was created by Chemical Vapor Deposition (CVD) growth process. Indications of post-growth treatment.



December 29, 2025

IGI Report Number **LG758523717**

PRINCESS CUT

LABORATORY GROWN DIAMOND

3.00 X 2.93 X 2.02 MM

Carat Weight **0.16 CARAT**

Color Grade **FANCY INTENSE BROWNISH PINK**

Clarity Grade **SI 1**

Polish **VERY GOOD**

Symmetry **GOOD**

Fluorescence **SLIGHT**

Inscription(s) **IGI LG758523717**

Comments: This Laboratory Grown Diamond was created by Chemical Vapor Deposition (CVD) growth process. Indications of post-growth treatment.



THIS DOCUMENT WAS PRODUCED WITH THE FOLLOWING SECURITY MEASURES: SPECIAL DOCUMENT PAPER, INK SCREENS, WATERMARK, BACKGROUND DESIGNS, HOLOGRAM AND OTHER SECURITY FEATURES NOT LISTED AND DO EXCEED DOCUMENT SECURITY INDUSTRY GUIDELINES.

For terms & conditions and to verify this report, please visit www.igi.org