



# INTERNATIONAL GEMOLOGICAL INSTITUTE

ELECTRONIC COPY

## LABORATORY GROWN DIAMOND REPORT

December 29, 2025  
IGI Report Number **LG758523711**  
Description **LABORATORY GROWN DIAMOND**  
Shape and Cutting Style **PRINCESS CUT**  
Measurements **2.99 X 2.91 X 1.97 MM**

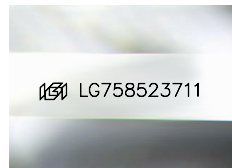
### GRADING RESULTS

Carat Weight **0.16 CARAT**  
Color Grade **FANCY LIGHT BROWN**  
Clarity Grade **SI 2**

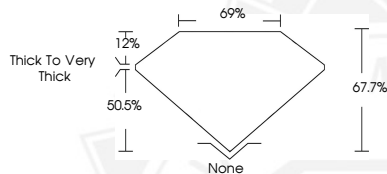
### ADDITIONAL GRADING INFORMATION

Polish **VERY GOOD**  
Symmetry **VERY GOOD**  
Fluorescence **SLIGHT**  
Inscription(s) **IGI LG758523711**

Comments: This Laboratory Grown Diamond was created by Chemical Vapor Deposition (CVD) growth process. Indications of post-growth treatment.



Sample Image Used



December 29, 2025

IGI Report Number **LG758523711**

**PRINCESS CUT**

**LABORATORY GROWN DIAMOND**

**2.99 X 2.91 X 1.97 MM**

Carat Weight **0.16 CARAT**  
Color Grade **FANCY LIGHT BROWN**

Clarity Grade **SI 2**

Polish **VERY GOOD**

Symmetry **VERY GOOD**

Fluorescence **SLIGHT**

Inscription(s) **IGI LG758523711**

Comments: This Laboratory Grown Diamond was created by Chemical Vapor Deposition (CVD) growth process. Indications of post-growth treatment.



December 29, 2025

IGI Report Number **LG758523711**

**PRINCESS CUT**

**LABORATORY GROWN DIAMOND**

**2.99 X 2.91 X 1.97 MM**

Carat Weight **0.16 CARAT**  
Color Grade **FANCY LIGHT BROWN**

Clarity Grade **SI 2**

Polish **VERY GOOD**

Symmetry **VERY GOOD**

Fluorescence **SLIGHT**

Inscription(s) **IGI LG758523711**

Comments: This Laboratory Grown Diamond was created by Chemical Vapor Deposition (CVD) growth process. Indications of post-growth treatment.



THIS DOCUMENT WAS PRODUCED WITH THE FOLLOWING SECURITY MEASURES: SPECIAL DOCUMENT PAPER, INK SCREENS, WATERMARK, BACKGROUND DESIGNS, HOLOGRAM AND OTHER SECURITY FEATURES NOT LISTED AND DO EXCEED DOCUMENT SECURITY INDUSTRY GUIDELINES.

For terms & conditions and to verify this report, please visit [www.igi.org](http://www.igi.org)