



# INTERNATIONAL GEMOLOGICAL INSTITUTE

ELECTRONIC COPY

## LABORATORY GROWN DIAMOND REPORT

December 26, 2025

IGI Report Number

LG758523520

Description

LABORATORY GROWN DIAMOND

Shape and Cutting Style

PRINCESS CUT

Measurements

3.08 X 3.03 X 1.72 MM

### GRADING RESULTS

Carat Weight

0.15 CARAT

Color Grade

FANCY VIVID PINK

Clarity Grade

VS 1

### ADDITIONAL GRADING INFORMATION

Polish

VERY GOOD

Symmetry

GOOD

Fluorescence

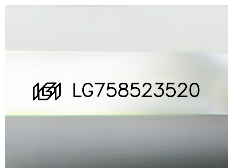
SLIGHT

Inscription(s)

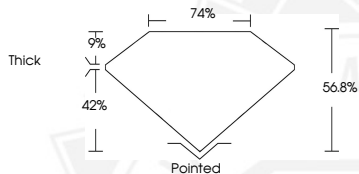
IGI LG758523520

Comments: This Laboratory Grown Diamond was created by Chemical Vapor Deposition (CVD) growth process.

Indications of post-growth treatment.



Sample Image Used



December 26, 2025

IGI Report Number LG758523520

PRINCESS CUT

LABORATORY GROWN DIAMOND

3.08 X 3.03 X 1.72 MM

Carat Weight 0.15 CARAT

Color Grade FANCY VIVID PINK

Clarity Grade VS 1

Polish VERY GOOD

Symmetry GOOD

Fluorescence SLIGHT

Inscription(s) IGI LG758523520

Comments: This Laboratory Grown Diamond was created by Chemical Vapor Deposition (CVD) growth process. Indications of post-growth treatment.



December 26, 2025

IGI Report Number LG758523520

PRINCESS CUT

LABORATORY GROWN DIAMOND

3.08 X 3.03 X 1.72 MM

Carat Weight 0.15 CARAT

Color Grade FANCY VIVID PINK

Clarity Grade VS 1

Polish VERY GOOD

Symmetry GOOD

Fluorescence SLIGHT

Inscription(s) IGI LG758523520

Comments: This Laboratory Grown Diamond was created by Chemical Vapor Deposition (CVD) growth process. Indications of post-growth treatment.



THIS DOCUMENT WAS PRODUCED WITH THE FOLLOWING SECURITY MEASURES: SPECIAL DOCUMENT PAPER, INK SCREENS, WATERMARK, BACKGROUND DESIGNS, HOLOGRAM AND OTHER SECURITY FEATURES NOT LISTED AND DO EXCEED DOCUMENT SECURITY INDUSTRY GUIDELINES.

For terms & conditions and to verify this report, please visit [www.igi.org](http://www.igi.org)