



# INTERNATIONAL GEMOLOGICAL INSTITUTE

## LABORATORY GROWN DIAMOND REPORT

December 26, 2025

IGI Report Number

LG758523372

Description

LABORATORY GROWN DIAMOND

Shape and Cutting Style

PRINCESS CUT

Measurements

3.06 X 3.01 X 2.11 MM

### GRADING RESULTS

Carat Weight

0.16 CARAT

Color Grade

FANCY VIVID BLUE

Clarity Grade

VS 1

### ADDITIONAL GRADING INFORMATION

Polish

VERY GOOD

Symmetry

VERY GOOD

Fluorescence

NONE

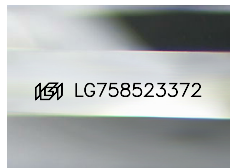
Inscription(s)

IGI LG758523372

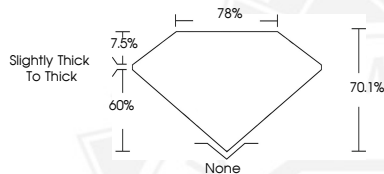
Comments: This Laboratory Grown Diamond was created by Chemical Vapor Deposition (CVD) growth process.

Indications of post-growth treatment.

ELECTRONIC COPY



Sample Image Used



December 26, 2025

IGI Report Number LG758523372

PRINCESS CUT

LABORATORY GROWN DIAMOND

3.06 X 3.01 X 2.11 MM

Carat Weight 0.16 CARAT

Color Grade FANCY VIVID BLUE

Clarity Grade VS 1

Polish VERY GOOD

Symmetry VERY GOOD

Fluorescence NONE

Inscription(s) IGI LG758523372

Comments: This Laboratory Grown Diamond was created by Chemical Vapor Deposition (CVD) growth process. Indications of post-growth treatment.



December 26, 2025

IGI Report Number LG758523372

PRINCESS CUT

LABORATORY GROWN DIAMOND

3.06 X 3.01 X 2.11 MM

Carat Weight 0.16 CARAT

Color Grade FANCY VIVID BLUE

Clarity Grade VS 1

Polish VERY GOOD

Symmetry VERY GOOD

Fluorescence NONE

Inscription(s) IGI LG758523372

Comments: This Laboratory Grown Diamond was created by Chemical Vapor Deposition (CVD) growth process. Indications of post-growth treatment.



THIS DOCUMENT WAS PRODUCED WITH THE FOLLOWING SECURITY MEASURES: SPECIAL DOCUMENT PAPER, INK SCREENS, WATERMARK, BACKGROUND DESIGNS, HOLOGRAM AND OTHER SECURITY FEATURES NOT LISTED AND DO EXCEED DOCUMENT SECURITY INDUSTRY GUIDELINES.

For terms & conditions and to verify this report, please visit [www.igi.org](http://www.igi.org)