



January 13, 2026

IGI Report Number **LG758523334**

MARQUISE BRILLIANT

LABORATORY GROWN DIAMOND

5.71 X 2.71 X 1.61 MM

Carat Weight **0.15 CARAT**

Color Grade **FANCY VIVID PINK**

Clarity Grade **VS 2**

Polish **VERY GOOD**

Symmetry **VERY GOOD**

Fluorescence **SLIGHT**

Inscription(s) **IGI LG758523334**

Comments: This Laboratory Grown Diamond was created by Chemical Vapor Deposition (CVD) growth process. Indications of post-growth treatment.
Secondary color: Orange

LABORATORY GROWN DIAMOND REPORT

January 13, 2026

IGI Report Number

LG758523334

Description

LABORATORY GROWN DIAMOND

Shape and Cutting Style

MARQUISE BRILLIANT

Measurements

5.71 X 2.71 X 1.61 MM

GRADING RESULTS

Carat Weight

0.15 CARAT

Color Grade

FANCY VIVID PINK

Clarity Grade

VS 2

ADDITIONAL GRADING INFORMATION

Polish

VERY GOOD

Symmetry

VERY GOOD

Fluorescence

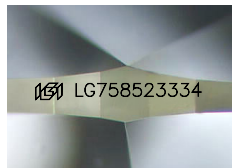
SLIGHT

Inscription(s)

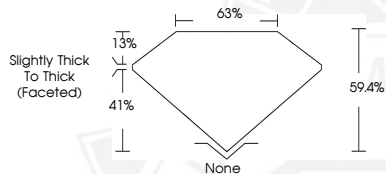
IGI LG758523334

Comments: This Laboratory Grown Diamond was created by Chemical Vapor Deposition (CVD) growth process. Indications of post-growth treatment.

Secondary color: Orange



Sample Image Used



January 13, 2026

IGI Report Number **LG758523334**

MARQUISE BRILLIANT

LABORATORY GROWN DIAMOND

5.71 X 2.71 X 1.61 MM

Carat Weight **0.15 CARAT**

Color Grade **FANCY VIVID PINK**

Clarity Grade **VS 2**

Polish **VERY GOOD**

Symmetry **VERY GOOD**

Fluorescence **SLIGHT**

Inscription(s) **IGI LG758523334**

Comments: This Laboratory Grown Diamond was created by Chemical Vapor Deposition (CVD) growth process. Indications of post-growth treatment.
Secondary color: Orange



THIS DOCUMENT WAS PRODUCED WITH THE FOLLOWING SECURITY MEASURES: SPECIAL DOCUMENT PAPER, INK SCREENS, WATERMARK, BACKGROUND DESIGNS, HOLOGRAM AND OTHER SECURITY FEATURES NOT LISTED AND DO EXCEED DOCUMENT SECURITY INDUSTRY GUIDELINES.