



INTERNATIONAL GEMOLOGICAL INSTITUTE

LABORATORY GROWN DIAMOND REPORT

December 26, 2025

IGI Report Number

LG758523314

Description

LABORATORY GROWN DIAMOND

Shape and Cutting Style

OVAL BRILLIANT

Measurements

4.19 X 3.05 X 1.71 MM

GRADING RESULTS

Carat Weight

0.14 CARAT

Color Grade

FANCY BROWN

Clarity Grade

VS 1

ADDITIONAL GRADING INFORMATION

Polish

VERY GOOD

Symmetry

VERY GOOD

Fluorescence

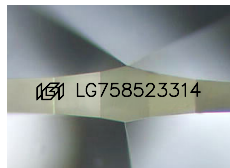
SLIGHT

Inscription(s)

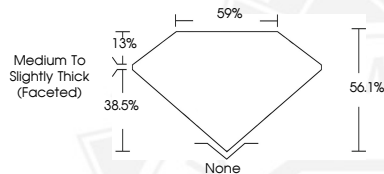
IGI LG758523314

Comments: This Laboratory Grown Diamond was created by Chemical Vapor Deposition (CVD) growth process. Indications of post-growth treatment.

ELECTRONIC COPY



Sample Image Used



December 26, 2025

IGI Report Number LG758523314

OVAL BRILLIANT

LABORATORY GROWN DIAMOND

4.19 X 3.05 X 1.71 MM

Carat Weight 0.14 CARAT

Color Grade FANCY BROWN

Clarity Grade VS 1

Polish VERY GOOD

Symmetry VERY GOOD

Fluorescence SLIGHT

Inscription(s) IGI LG758523314

Comments: This Laboratory Grown Diamond was created by Chemical Vapor Deposition (CVD) growth process. Indications of post-growth treatment.



December 26, 2025

IGI Report Number LG758523314

OVAL BRILLIANT

LABORATORY GROWN DIAMOND

4.19 X 3.05 X 1.71 MM

Carat Weight 0.14 CARAT

Color Grade FANCY BROWN

Clarity Grade VS 1

Polish VERY GOOD

Symmetry VERY GOOD

Fluorescence SLIGHT

Inscription(s) IGI LG758523314

Comments: This Laboratory Grown Diamond was created by Chemical Vapor Deposition (CVD) growth process. Indications of post-growth treatment.



THIS DOCUMENT WAS PRODUCED WITH THE FOLLOWING SECURITY MEASURES: SPECIAL DOCUMENT PAPER, INK SCREENS, WATERMARK, BACKGROUND DESIGNS, HOLOGRAM AND OTHER SECURITY FEATURES NOT LISTED AND DO EXCEED DOCUMENT SECURITY INDUSTRY GUIDELINES.

For terms & conditions and to verify this report, please visit www.igi.org