



INTERNATIONAL GEMOLOGICAL INSTITUTE

ELECTRONIC COPY

LABORATORY GROWN DIAMOND REPORT

December 28, 2025

IGI Report Number

LG758523249

Description

LABORATORY GROWN DIAMOND

Shape and Cutting Style

PRINCESS CUT

Measurements

3.14 X 3.05 X 2.12 MM

GRADING RESULTS

Carat Weight

0.17 CARAT

Color Grade

FANCY VIVID BLUE

Clarity Grade

VS 1

ADDITIONAL GRADING INFORMATION

Polish

VERY GOOD

Symmetry

VERY GOOD

Fluorescence

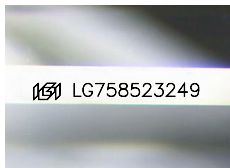
NONE

Inscription(s)

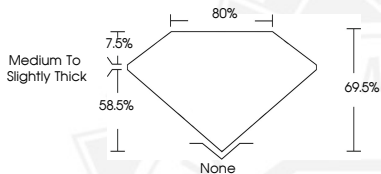
IGI LG758523249

Comments: This Laboratory Grown Diamond was created by
Chemical Vapor Deposition (CVD) growth process.

Indications of post-growth treatment.



Sample Image Used



December 28, 2025

IGI Report Number LG758523249

PRINCESS CUT

LABORATORY GROWN DIAMOND

3.14 X 3.05 X 2.12 MM

Carat Weight 0.17 CARAT

Color Grade FANCY VIVID BLUE

Clarity Grade VS 1

Polish VERY GOOD

Symmetry VERY GOOD

Fluorescence NONE

Inscription(s) IGI LG758523249

Comments: This Laboratory Grown
Diamond was created by
Chemical Vapor Deposition (CVD)
growth process. Indications of
post-growth treatment.



December 28, 2025

IGI Report Number LG758523249

PRINCESS CUT

LABORATORY GROWN DIAMOND

3.14 X 3.05 X 2.12 MM

Carat Weight 0.17 CARAT

Color Grade FANCY VIVID BLUE

Clarity Grade VS 1

Polish VERY GOOD

Symmetry VERY GOOD

Fluorescence NONE

Inscription(s) IGI LG758523249

Comments: This Laboratory Grown
Diamond was created by
Chemical Vapor Deposition (CVD)
growth process. Indications of
post-growth treatment.



THIS DOCUMENT WAS PRODUCED WITH THE FOLLOWING SECURITY MEASURES: SPECIAL DOCUMENT PAPER, INK SCREENS, WATERMARK, BACKGROUND DESIGNS, HOLOGRAM AND OTHER SECURITY FEATURES NOT LISTED AND DO EXCEED DOCUMENT SECURITY INDUSTRY GUIDELINES.

For terms & conditions and to verify this report, please visit www.igi.org