



ELECTRONIC COPY

LG758523094
Report verification at igi.org



December 25, 2025
IGI Report Number **LG758523094**
Description **LABORATORY GROWN DIAMOND**
Shape and Cutting Style **PEAR BRILLIANT**
Measurements **9.52 X 6.39 X 4.16 MM**
GRADING RESULTS
Carat Weight **1.47 CARAT**
Color Grade **FANCY VIVID YELLOW**
Clarity Grade **VVS 2**

December 25, 2025
IGI Report Number **LG758523094**
Description **LABORATORY GROWN DIAMOND**
Shape and Cutting Style **PEAR BRILLIANT**
Measurements **9.52 X 6.39 X 4.16 MM**

GRADING RESULTS

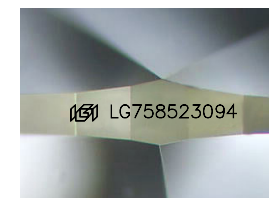
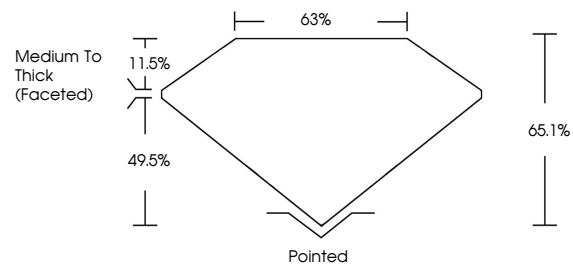
Carat Weight **1.47 CARAT**
Color Grade **FANCY VIVID YELLOW**
Clarity Grade **VVS 2**

ADDITIONAL GRADING INFORMATION

Polish **VERY GOOD**
Symmetry **VERY GOOD**
Fluorescence **NONE**
Inscription(s) **LG758523094**

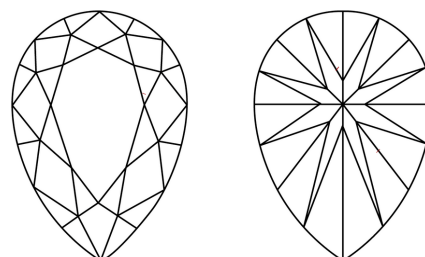
Comments: As Grown - No indication of post-growth treatment.
This Laboratory Grown Diamond was created by High Pressure High Temperature (HPHT) growth process.

PROPORTIONS



Sample Image Used

CLARITY CHARACTERISTICS



KEY TO SYMBOLS

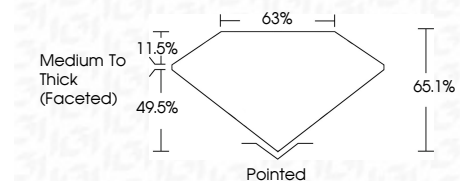
Red symbols indicate internal characteristics.
Green symbols indicate external characteristics.

COLOR

D E F G H I J Faint Very Light Light

CLARITY

FL	IF	VVS ¹⁻²	VS ¹⁻²	SI ¹⁻²	I ¹⁻³
Flawless	Internally Flawless	Very Very Slightly Included	Very Slightly Included	Slightly Included	Included



ADDITIONAL GRADING INFORMATION

Polish **VERY GOOD**
Symmetry **VERY GOOD**
Fluorescence **NONE**
Inscription(s) **LG758523094**
Comments: As Grown - No indication of post-growth treatment.
This Laboratory Grown Diamond was created by High Pressure High Temperature (HPHT) growth process.



December 25, 2025
IGI Report No LG758523094
PEAR BRILLIANT
9.52 X 6.39 X 4.16 MM
1.47 CARAT
Color Grade **FANCY VIVID YELLOW**
Clarity Grade **VVS 2**
Depth **65.1%**
Table **63%**
Girdle **Medium To Thick (Faceted)**
Culet **Pointed**
Polish **VERY GOOD**
Symmetry **VERY GOOD**
Fluorescence **NONE**
Inscription(s) **LG758523094**
Comments: As Grown - No indication of post-growth treatment.
This Laboratory Grown Diamond was created by High Pressure High Temperature (HPHT) growth process.