



ELECTRONIC COPY

LG758518395
Report verification at igi.org



December 20, 2025
IGI Report Number **LG758518395**
Description **LABORATORY GROWN DIAMOND**
Shape and Cutting Style **CUT CORNERED
RECTANGULAR MIXED CUT**
Measurements **10.06 X 7.41 X 5.04 MM**
GRADING RESULTS
Carat Weight **3.60 CARATS**
Color Grade **FANCY INTENSE YELLOW**
Clarity Grade **VS 1**

LABORATORY GROWN DIAMOND REPORT

December 20, 2025
IGI Report Number **LG758518395**
Description **LABORATORY GROWN DIAMOND**
Shape and Cutting Style **CUT CORNERED RECTANGULAR
MIXED CUT**
Measurements **10.06 X 7.41 X 5.04 MM**

GRADING RESULTS

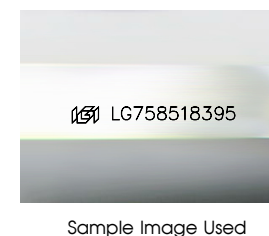
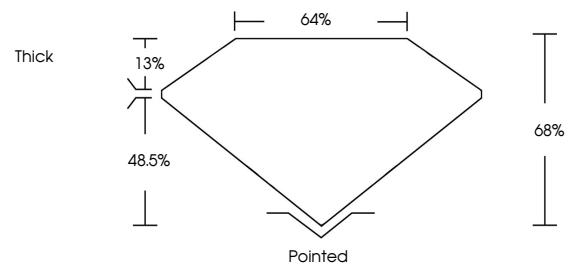
Carat Weight **3.60 CARATS**
Color Grade **FANCY INTENSE YELLOW**
Clarity Grade **VS 1**

ADDITIONAL GRADING INFORMATION

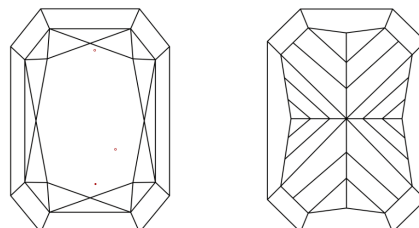
Polish **EXCELLENT**
Symmetry **EXCELLENT**
Fluorescence **NONE**
Inscription(s) **LG758518395**

Comments: This Laboratory Grown Diamond was created by Chemical Vapor Deposition (CVD) growth process.

PROPORTIONS



CLARITY CHARACTERISTICS



KEY TO SYMBOLS

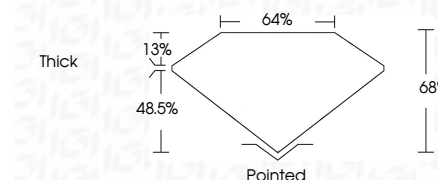
Red symbols indicate internal characteristics.
Green symbols indicate external characteristics.

COLOR

D E F G H I J Faint Very Light Light

CLARITY

FL	IF	VS ¹⁻²	VS ¹⁻²	SI ¹⁻²	I ¹⁻³
Flawless	Internally Flawless	Very Very Slightly Included	Very Slightly Included	Slightly Included	Included



ADDITIONAL GRADING INFORMATION

Polish **EXCELLENT**
Symmetry **EXCELLENT**
Fluorescence **NONE**
Inscription(s) **LG758518395**
Comments: This Laboratory Grown Diamond was created by Chemical Vapor Deposition (CVD) growth process.



December 20, 2025
IGI Report No LG758518395
CUT CORNERED RECT. MIXED CUT
3.60 CARATS
FANCY INTENSE YELLOW
VS 1
68%
64%
Thick
Pointed
EXCELLENT
EXCELLENT
NONE
Inscription(s) LG758518395
Comments: This Laboratory Grown Diamond was created by Chemical Vapor Deposition (CVD) growth process.