



ELECTRONIC COPY

LG758518290
Report verification at igi.org



December 23, 2025

IGI Report Number **LG758518290**

Description **LABORATORY GROWN DIAMOND**

Shape and Cutting Style **CUT CORNERED
RECTANGULAR MODIFIED
BRILLIANT**

Measurements **7.02 X 5.11 X 3.52 MM**

GRADING RESULTS

Carat Weight **1.23 CARAT**

Color Grade **FANCY INTENSE YELLOW**

Clarity Grade **VVS 2**

December 23, 2025
IGI Report Number **LG758518290**
Description **LABORATORY GROWN DIAMOND**
Shape and Cutting Style **CUT CORNERED RECTANGULAR
MODIFIED BRILLIANT**
Measurements **7.02 X 5.11 X 3.52 MM**

GRADING RESULTS

Carat Weight **1.23 CARAT**

Color Grade **FANCY INTENSE YELLOW**

Clarity Grade **VVS 2**

ADDITIONAL GRADING INFORMATION

Polish **VERY GOOD**

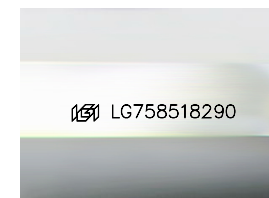
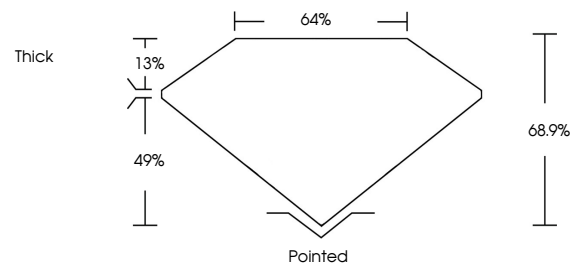
Symmetry **EXCELLENT**

Fluorescence **NONE**

Inscription(s) **IGI LG758518290**

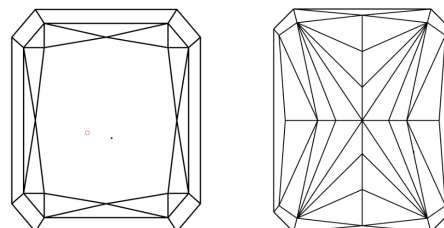
Comments: This Laboratory Grown Diamond was created by Chemical Vapor Deposition (CVD) growth process.

PROPORTIONS



Sample Image Used

CLARITY CHARACTERISTICS



KEY TO SYMBOLS

Red symbols indicate internal characteristics.
Green symbols indicate external characteristics.

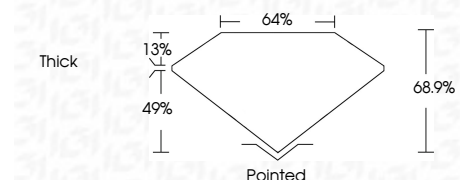
COLOR

D E F G H I J Faint Very Light Light

CLARITY

FL IF VVS¹⁻² VS¹⁻² SI¹⁻² I¹⁻³

Flawless Internally Flawless Very Very Slightly Included Very Slightly Included Slightly Included Included



ADDITIONAL GRADING INFORMATION

Polish **VERY GOOD**

Symmetry **EXCELLENT**

Fluorescence **NONE**

Inscription(s) **IGI LG758518290**

Comments: This Laboratory Grown Diamond was created by Chemical Vapor Deposition (CVD) growth process.



IGI



December 23, 2025
IGI Report No LG758518290
CUT CORNERED RECT. MODIFIED BRILLIANT
7.02 X 5.11 X 3.52 MM
Carat Weight 1.23 CARAT
Color Grade FANCY INTENSE YELLOW
Clarity Grade VVS 2
Depth 68.9%
Table 49%
Girdle Thick
Culet Pointed
Polish VERY GOOD
Symmetry EXCELLENT
Fluorescence NONE
Inscription(s) IGI LG758518290
Comments: This Laboratory Grown Diamond was created by Chemical Vapor Deposition (CVD) growth process.