



ELECTRONIC COPY

LG758518288
Report verification at igi.org



December 23, 2025
IGI Report Number **LG758518288**
Description **LABORATORY GROWN DIAMOND**
Shape and Cutting Style **CUT CORNERED
RECTANGULAR MIXED CUT**
Measurements **6.89 X 5.31 X 3.60 MM**
GRADING RESULTS
Carat Weight **1.28 CARAT**
Color Grade **FANCY INTENSE YELLOW**
Clarity Grade **VVS 2**

LABORATORY GROWN DIAMOND REPORT

December 23, 2025
IGI Report Number **LG758518288**
Description **LABORATORY GROWN DIAMOND**
Shape and Cutting Style **CUT CORNERED RECTANGULAR
MIXED CUT**
Measurements **6.89 X 5.31 X 3.60 MM**

GRADING RESULTS

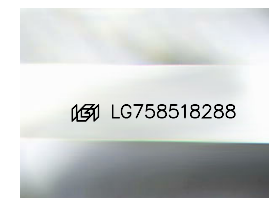
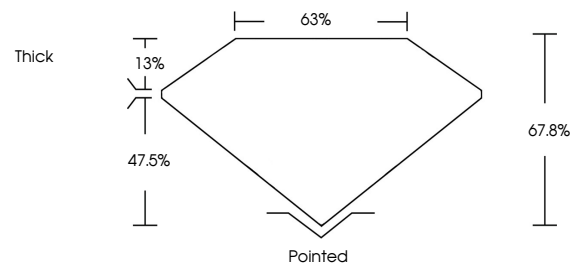
Carat Weight **1.28 CARAT**
Color Grade **FANCY INTENSE YELLOW**
Clarity Grade **VVS 2**

ADDITIONAL GRADING INFORMATION

Polish **EXCELLENT**
Symmetry **EXCELLENT**
Fluorescence **NONE**
Inscription(s) **IGI LG758518288**

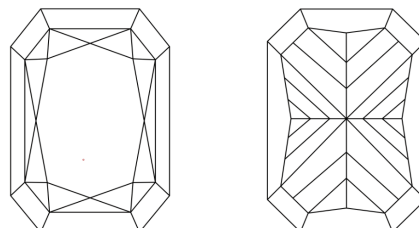
Comments: This Laboratory Grown Diamond was created by Chemical Vapor Deposition (CVD) growth process.

PROPORTIONS



Sample Image Used

CLARITY CHARACTERISTICS



KEY TO SYMBOLS

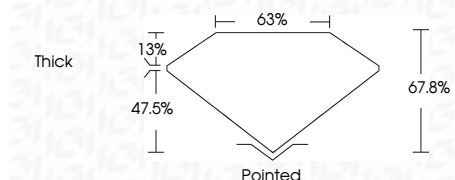
Red symbols indicate internal characteristics.
Green symbols indicate external characteristics.

COLOR

D E F G H I J Faint Very Light Light

CLARITY

FL	IF	VVS ¹⁻²	VS ¹⁻²	SI ¹⁻²	I ¹⁻³
Flawless	Internally Flawless	Very Very Slightly Included	Very Slightly Included	Slightly Included	Included



ADDITIONAL GRADING INFORMATION

Polish **EXCELLENT**
Symmetry **EXCELLENT**
Fluorescence **NONE**
Inscription(s) **IGI LG758518288**
Comments: This Laboratory Grown Diamond was created by Chemical Vapor Deposition (CVD) growth process.



IGI



December 23, 2025
IGI Report No. LG758518288
CUT CORNERED RECT. MIXED CUT
6.89 X 5.31 X 3.60 MM
1.28 CARAT
FANCY INTENSE YELLOW
VVS 2
67.8%
63%
Thick
Pointed
EXCELLENT
EXCELLENT
NONE
IGI LG758518288
Comments: This Laboratory Grown Diamond was created by Chemical Vapor Deposition (CVD) growth process.