



December 18, 2025

IGI Report Number **LG758517718**

ROUND BRILLIANT

LABORATORY GROWN DIAMOND

5.14 - 5.18 X 3.21 MM

Carat Weight	0.54 CARAT
Color Grade	E
Clarity Grade	VVS 2
Cut Grade	VERY GOOD
Polish	VERY GOOD
Symmetry	VERY GOOD
Fluorescence	NONE
Inscription(s)	IGI LG758517718

Comments: This Laboratory Grown Diamond was created by Chemical Vapor Deposition (CVD) growth process. Type IIa

LABORATORY GROWN DIAMOND REPORT

December 18, 2025

IGI Report Number **LG758517718**

Description **LABORATORY GROWN DIAMOND**

Shape and Cutting Style **ROUND BRILLIANT**

Measurements **5.14 - 5.18 X 3.21 MM**

GRADING RESULTS

Carat Weight **0.54 CARAT**

Color Grade **E**

Clarity Grade **VVS 2**

Cut Grade **VERY GOOD**

ADDITIONAL GRADING INFORMATION

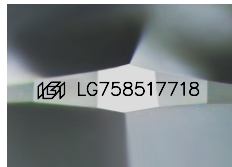
Polish **VERY GOOD**

Symmetry **VERY GOOD**

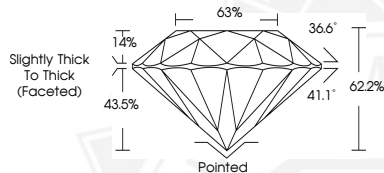
Fluorescence **NONE**

Inscription(s) **IGI LG758517718**

Comments: This Laboratory Grown Diamond was created by Chemical Vapor Deposition (CVD) growth process. Type IIa



Sample Image Used



December 18, 2025

IGI Report Number **LG758517718**

ROUND BRILLIANT

LABORATORY GROWN DIAMOND

5.14 - 5.18 X 3.21 MM

Carat Weight	0.54 CARAT
Color Grade	E
Clarity Grade	VVS 2
Cut Grade	VERY GOOD
Polish	VERY GOOD
Symmetry	VERY GOOD
Fluorescence	NONE
Inscription(s)	IGI LG758517718

Comments: This Laboratory Grown Diamond was created by Chemical Vapor Deposition (CVD) growth process. Type IIa



THIS DOCUMENT WAS PRODUCED WITH THE FOLLOWING SECURITY MEASURES: SPECIAL DOCUMENT PAPER, INK SCREENS, WATERMARK, BACKGROUND DESIGNS, HOLOGRAM AND OTHER SECURITY FEATURES NOT LISTED AND DO EXCEED DOCUMENT SECURITY INDUSTRY GUIDELINES.