



LABORATORY GROWN DIAMOND REPORT

December 20, 2025
 IGI Report Number **LG758513610**
 Description **LABORATORY GROWN DIAMOND**
 Shape and Cutting Style **TAPERED BAGUETTE**
 Measurements **7.02 X 4.23 X 2.72 MM**

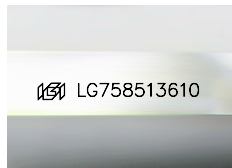
GRADING RESULTS

Carat Weight **0.65 CARAT**
 Color Grade **F**
 Clarity Grade **VVS 2**

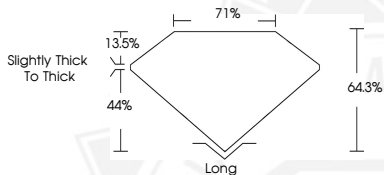
ADDITIONAL GRADING INFORMATION

Polish **VERY GOOD**
 Symmetry **VERY GOOD**
 Fluorescence **NONE**
 Inscription(s) **IGI LG758513610**

Comments: This Laboratory Grown Diamond was created by Chemical Vapor Deposition (CVD) growth process.
 Type IIa



Sample Image Used



December 20, 2025
 IGI Report Number **LG758513610**
TAPERED BAGUETTE
LABORATORY GROWN DIAMOND
7.02 X 4.23 X 2.72 MM
 Carat Weight **0.65 CARAT**
 Color Grade **F**
 Clarity Grade **VVS 2**
 Polish **VERY GOOD**
 Symmetry **VERY GOOD**
 Fluorescence **NONE**
 Inscription(s) **IGI LG758513610**

Comments: This Laboratory Grown Diamond was created by Chemical Vapor Deposition (CVD) growth process. Type IIa



December 20, 2025
 IGI Report Number **LG758513610**
TAPERED BAGUETTE
LABORATORY GROWN DIAMOND
7.02 X 4.23 X 2.72 MM
 Carat Weight **0.65 CARAT**
 Color Grade **F**
 Clarity Grade **VVS 2**
 Polish **VERY GOOD**
 Symmetry **VERY GOOD**
 Fluorescence **NONE**
 Inscription(s) **IGI LG758513610**

Comments: This Laboratory Grown Diamond was created by Chemical Vapor Deposition (CVD) growth process. Type IIa



THIS DOCUMENT WAS PRODUCED WITH THE FOLLOWING SECURITY MEASURES: SPECIAL DOCUMENT PAPER, INK SCREENS, WATERMARK, BACKGROUND DESIGNS, HOLOGRAM AND OTHER SECURITY FEATURES NOT LISTED AND DO EXCEED DOCUMENT SECURITY INDUSTRY GUIDELINES.