



LABORATORY GROWN DIAMOND REPORT

December 30, 2025
 IGI Report Number **LG758512066**
 Description **LABORATORY GROWN DIAMOND**
 Shape and Cutting Style **CUT CORNERED RECTANGULAR MIXED CUT**
 Measurements **4.42 X 4.00 X 0.94 MM**

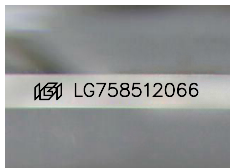
GRADING RESULTS

Carat Weight **0.19 CARAT**
 Color Grade **FANCY INTENSE PINK**
 Clarity Grade **SI 1**

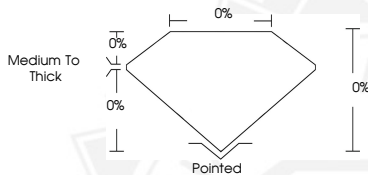
ADDITIONAL GRADING INFORMATION

Polish **VERY GOOD**
 Symmetry **VERY GOOD**
 Fluorescence **STRONG**
 Inscription(s) **IGI LG758512066**

Comments: This Laboratory Grown Diamond was created by Chemical Vapor Deposition (CVD) growth process. Indications of post-growth treatment.



Sample Image Used



December 30, 2025
 IGI Report Number **LG758512066**
 CUT CORNERED RECTANGULAR
 MIXED CUT
 LABORATORY GROWN DIAMOND
4.42 X 4.00 X 0.94 MM
 Carat Weight **0.19 CARAT**
 Color Grade **FANCY INTENSE PINK**
 Clarity Grade **SI 1**
 Polish **VERY GOOD**
 Symmetry **VERY GOOD**
 Fluorescence **STRONG**
 Inscription(s) **IGI LG758512066**

Comments: This Laboratory Grown Diamond was created by Chemical Vapor Deposition (CVD) growth process. Indications of post-growth treatment.



December 30, 2025
 IGI Report Number **LG758512066**
 CUT CORNERED RECTANGULAR
 MIXED CUT
 LABORATORY GROWN DIAMOND
4.42 X 4.00 X 0.94 MM
 Carat Weight **0.19 CARAT**
 Color Grade **FANCY INTENSE PINK**
 Clarity Grade **SI 1**
 Polish **VERY GOOD**
 Symmetry **VERY GOOD**
 Fluorescence **STRONG**
 Inscription(s) **IGI LG758512066**

Comments: This Laboratory Grown Diamond was created by Chemical Vapor Deposition (CVD) growth process. Indications of post-growth treatment.



THIS DOCUMENT WAS PRODUCED WITH THE FOLLOWING SECURITY MEASURES: SPECIAL DOCUMENT PAPER, INK SCREENS, WATERMARK, BACKGROUND DESIGNS, HOLOGRAM AND OTHER SECURITY FEATURES NOT LISTED AND DO EXCEED DOCUMENT SECURITY INDUSTRY GUIDELINES.