



December 22, 2025

IGI Report Number **LG758512035**

PEAR BRILLIANT

LABORATORY GROWN DIAMOND

5.10 X 3.32 X 2.01 MM

Carat Weight **0.19 CARAT**

Color Grade **FANCY VIVID PINK**

Clarity Grade **VVS 2**

Polish **VERY GOOD**

Symmetry **VERY GOOD**

Fluorescence **STRONG**

Inscription(s) **IGI LG758512035**

Comments: This Laboratory Grown Diamond was created by Chemical Vapor Deposition (CVD) growth process. Indications of post-growth treatment.
Secondary color: Orange

LABORATORY GROWN DIAMOND REPORT

December 22, 2025

IGI Report Number **LG758512035**

Description **LABORATORY GROWN DIAMOND**

Shape and Cutting Style **PEAR BRILLIANT**

Measurements **5.10 X 3.32 X 2.01 MM**

GRADING RESULTS

Carat Weight **0.19 CARAT**

Color Grade **FANCY VIVID PINK**

Clarity Grade **VVS 2**

ADDITIONAL GRADING INFORMATION

Polish **VERY GOOD**

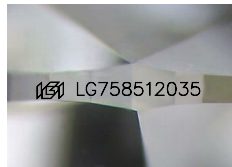
Symmetry **VERY GOOD**

Fluorescence **STRONG**

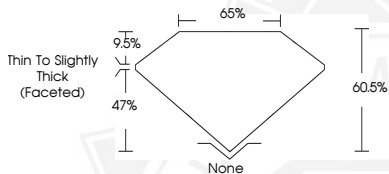
Inscription(s) **IGI LG758512035**

Comments: This Laboratory Grown Diamond was created by Chemical Vapor Deposition (CVD) growth process.
Indications of post-growth treatment.

Secondary color: Orange



Sample Image Used



December 22, 2025

IGI Report Number **LG758512035**

PEAR BRILLIANT

LABORATORY GROWN DIAMOND

5.10 X 3.32 X 2.01 MM

Carat Weight **0.19 CARAT**

Color Grade **FANCY VIVID PINK**

Clarity Grade **VVS 2**

Polish **VERY GOOD**

Symmetry **VERY GOOD**

Fluorescence **STRONG**

Inscription(s) **IGI LG758512035**

Comments: This Laboratory Grown Diamond was created by Chemical Vapor Deposition (CVD) growth process. Indications of post-growth treatment.
Secondary color: Orange



THIS DOCUMENT WAS PRODUCED WITH THE FOLLOWING SECURITY MEASURES: SPECIAL DOCUMENT PAPER, INK SCREENS, WATERMARK, BACKGROUND DESIGNS, HOLOGRAM AND OTHER SECURITY FEATURES NOT LISTED AND DO EXCEED DOCUMENT SECURITY INDUSTRY GUIDELINES.