



INTERNATIONAL GEMOLOGICAL INSTITUTE

LABORATORY GROWN DIAMOND REPORT

December 22, 2025

IGI Report Number

LG758512030

Description

LABORATORY GROWN DIAMOND

Shape and Cutting Style

PRINCESS CUT

Measurements

3.25 X 3.23 X 2.29 MM

GRADING RESULTS

Carat Weight

0.19 CARAT

Color Grade

FANCY VIVID GREEN

Clarity Grade

VVS 2

ADDITIONAL GRADING INFORMATION

Polish

GOOD

Symmetry

VERY GOOD

Fluorescence

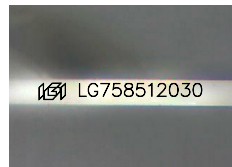
NONE

Inscription(s)

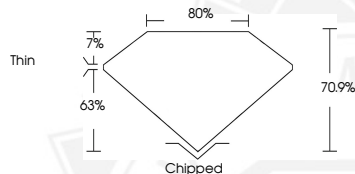
IGI LG758512030

Comments: This Laboratory Grown Diamond was created by Chemical Vapor Deposition (CVD) growth process. Indications of post-growth treatment.

ELECTRONIC COPY



Sample Image Used



December 22, 2025

IGI Report Number LG758512030

PRINCESS CUT

LABORATORY GROWN DIAMOND

3.25 X 3.23 X 2.29 MM

Carat Weight 0.19 CARAT

Color Grade FANCY VIVID GREEN

Clarity Grade VVS 2

Polish GOOD

Symmetry VERY GOOD

Fluorescence NONE

Inscription(s) IGI LG758512030

Comments: This Laboratory Grown Diamond was created by Chemical Vapor Deposition (CVD) growth process. Indications of post-growth treatment.



December 22, 2025

IGI Report Number LG758512030

PRINCESS CUT

LABORATORY GROWN DIAMOND

3.25 X 3.23 X 2.29 MM

Carat Weight 0.19 CARAT

Color Grade FANCY VIVID GREEN

Clarity Grade VVS 2

Polish GOOD

Symmetry VERY GOOD

Fluorescence NONE

Inscription(s) IGI LG758512030

Comments: This Laboratory Grown Diamond was created by Chemical Vapor Deposition (CVD) growth process. Indications of post-growth treatment.



THIS DOCUMENT WAS PRODUCED WITH THE FOLLOWING SECURITY MEASURES: SPECIAL DOCUMENT PAPER, INK SCREENS, WATERMARK, BACKGROUND DESIGNS, HOLOGRAM AND OTHER SECURITY FEATURES NOT LISTED AND DO EXCEED DOCUMENT SECURITY INDUSTRY GUIDELINES.

For terms & conditions and to verify this report, please visit www.igi.org