



**ELECTRONIC COPY**

## LABORATORY GROWN DIAMOND REPORT

December 18, 2025	
IGI Report Number	LG758511707
Description	LABORATORY GROWN DIAMOND
Shape and Cutting Style	ROUND BRILLIANT
Measurements	8.47 - 8.51 X 5.39 MM

## GRADING RESULTS

Carat Weight	2.42 CARATS
Color Grade	E
Clarity Grade	VS 1
Cut Grade	EXCELLENT

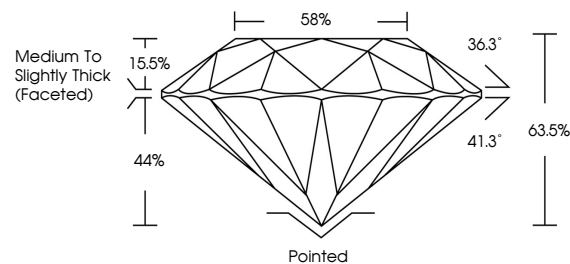
### ADDITIONAL GRADING INFORMATION

Polish	EXCELLENT
Symmetry	EXCELLENT
Fluorescence	NONE
Inscription(s)	 LG758511707

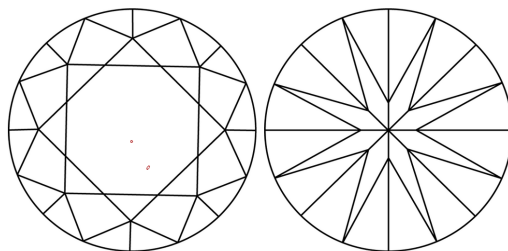
Comments: This Laboratory Grown Diamond was created by Chemical Vapor Deposition (CVD) growth process.  
Type IIa

LG758511707  
Report verification at [igi.org](https://igi.org)

## PROPORTIONS

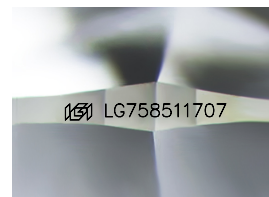


## CLARITY CHARACTERISTICS



## KEY TO SYMBOLS

Red symbols indicate internal characteristics.  
Green symbols indicate external characteristics.



Sample Image Used

## COLOR

D E F G H I J Faint Very Light Light

## CLARITY

FL	IF	VVS <sup>1-2</sup>	VS <sup>1-2</sup>	SI <sup>1-2</sup>	I <sup>1-3</sup>
Flawless	Internally Flawless	Very Very Slightly Included	Very Slightly Included	Slightly Included	Included

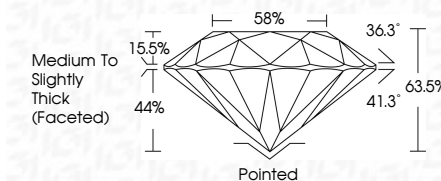
## LABORATORY GROWN DIAMOND REPORT



December 18, 2025	
IGI Report Number	LG758511707
Description	LABORATORY GROWN DIAMOND
Shape and Cutting Style	ROUND BRILLIANT
Measurements	8.47 - 8.51 X 5.39 MM

## GRADING RESULTS

Carat Weight	2.42 CARATS
Color Grade	E
Clarity Grade	VS 1
Cut Grade	EXCELLENT



### ADDITIONAL GRADING INFORMATION

Polish	EXCELLENT
Symmetry	EXCELLENT
Fluorescence	NONE
Inscription(s)	 LG758511 1707
Comments: This Laboratory Grown Diamond was created by Chemical Vapor Deposition (CVD) growth process.	
Type IIa	



© IGI 2020, International Gemological Institute

FD - 10 20

**www.igi.org**

THIS DOCUMENT WAS PRODUCED WITH THE FOLLOWING SECURITY MEASURES: SPECIAL DOCUMENT PAPER, INK SCREENS, WATERMARK, BACKGROUND DESIGNS, HOLOGRAM AND OTHER SECURITY FEATURES NOT LISTED AND DO EXCEED DOCUMENT SECURITY INDUSTRY GUIDELINES

December 18, 2025  
IGI Report No LG758511707  
ROUND BRILLIANT

<b>6.47 - 8.51 X 5.39 MM</b>		<b>2.42 CARATS</b>	
Carat Weight			
Color Grade			
Clarity Grade		Vs 1	
Cut Grade		EXCELLENT	
Depth		63.05%	
Table		58%	
Girdle		Medium to Slightly Thick (Faceted)	
Culet		Pointed	
Polish		EXCELLENT	
Symmetry		EXCELLENT	
Fluorescence		NONE	

**Comments:**  
This Laboratory Grown Diamond was created by Chemical Vapor Deposition (CVD) growth process.