



# INTERNATIONAL GEMOLOGICAL INSTITUTE

ELECTRONIC COPY

## LABORATORY GROWN DIAMOND REPORT

December 20, 2025

IGI Report Number

LG758510983

Description

LABORATORY GROWN DIAMOND

Shape and Cutting Style

RECTANGULAR PRINCESS CUT

Measurements

3.33 X 3.13 X 2.00 MM

### GRADING RESULTS

Carat Weight

0.18 CARAT

Color Grade

FANCY INTENSE BROWNISH PINK

Clarity Grade

VVS 2

### ADDITIONAL GRADING INFORMATION

Polish

VERY GOOD

Symmetry

VERY GOOD

Fluorescence

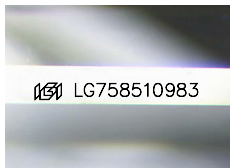
STRONG

Inscription(s)

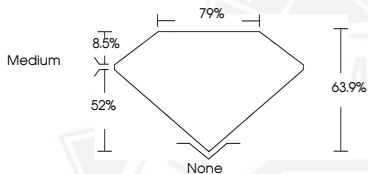
IGI LG758510983

Comments: This Laboratory Grown Diamond was created by Chemical Vapor Deposition (CVD) growth process.

Indications of post-growth treatment.



Sample Image Used



December 20, 2025

IGI Report Number LG758510983

RECTANGULAR PRINCESS CUT

LABORATORY GROWN DIAMOND

3.33 X 3.13 X 2.00 MM

Carat Weight 0.18 CARAT

Color Grade FANCY INTENSE BROWNISH PINK

Clarity Grade VVS 2

Polish VERY GOOD

Symmetry VERY GOOD

Fluorescence STRONG

Inscription(s) IGI LG758510983

Comments: This Laboratory Grown Diamond was created by Chemical Vapor Deposition (CVD) growth process. Indications of post-growth treatment.



December 20, 2025

IGI Report Number LG758510983

RECTANGULAR PRINCESS CUT

LABORATORY GROWN DIAMOND

3.33 X 3.13 X 2.00 MM

Carat Weight 0.18 CARAT

Color Grade FANCY INTENSE BROWNISH PINK

Clarity Grade VVS 2

Polish VERY GOOD

Symmetry VERY GOOD

Fluorescence STRONG

Inscription(s) IGI LG758510983

Comments: This Laboratory Grown Diamond was created by Chemical Vapor Deposition (CVD) growth process. Indications of post-growth treatment.



THIS DOCUMENT WAS PRODUCED WITH THE FOLLOWING SECURITY MEASURES: SPECIAL DOCUMENT PAPER, INK SCREENS, WATERMARK, BACKGROUND DESIGNS, HOLOGRAM AND OTHER SECURITY FEATURES NOT LISTED AND DO EXCEED DOCUMENT SECURITY INDUSTRY GUIDELINES.

For terms & conditions and to verify this report, please visit [www.igi.org](http://www.igi.org)