



INTERNATIONAL GEMOLOGICAL INSTITUTE

ELECTRONIC COPY

LABORATORY GROWN DIAMOND REPORT

December 24, 2025
IGI Report Number **LG758510912**
Description **LABORATORY GROWN DIAMOND**
Shape and Cutting Style **PRINCESS CUT**
Measurements **3.28 X 3.15 X 2.29 MM**

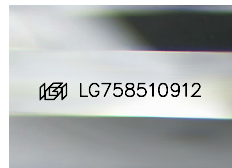
GRADING RESULTS

Carat Weight **0.21 CARAT**
Color Grade **FANCY VIVID PINK**
Clarity Grade **I 1**

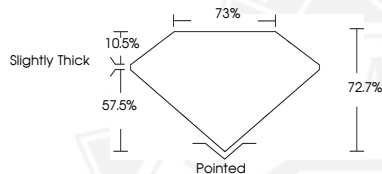
ADDITIONAL GRADING INFORMATION

Polish **VERY GOOD**
Symmetry **VERY GOOD**
Fluorescence **STRONG**
Inscription(s) **IGI LG758510912**

Comments: This Laboratory Grown Diamond was created by
Chemical Vapor Deposition (CVD) growth process.
Indications of post-growth treatment.



Sample Image Used



December 24, 2025
IGI Report Number **LG758510912**
PRINCESS CUT
LABORATORY GROWN DIAMOND
3.28 X 3.15 X 2.29 MM
Carat Weight **0.21 CARAT**
Color Grade **FANCY VIVID PINK**
Clarity Grade **I 1**
Polish **VERY GOOD**
Symmetry **VERY GOOD**
Fluorescence **STRONG**
Inscription(s) **IGI LG758510912**

Comments: This Laboratory Grown
Diamond was created by
Chemical Vapor Deposition (CVD)
growth process. Indications of
post-growth treatment.



December 24, 2025
IGI Report Number **LG758510912**
PRINCESS CUT
LABORATORY GROWN DIAMOND
3.28 X 3.15 X 2.29 MM
Carat Weight **0.21 CARAT**
Color Grade **FANCY VIVID PINK**
Clarity Grade **I 1**
Polish **VERY GOOD**
Symmetry **VERY GOOD**
Fluorescence **STRONG**
Inscription(s) **IGI LG758510912**

Comments: This Laboratory Grown
Diamond was created by
Chemical Vapor Deposition (CVD)
growth process. Indications of
post-growth treatment.



THIS DOCUMENT WAS PRODUCED WITH THE FOLLOWING SECURITY MEASURES: SPECIAL DOCUMENT PAPER, INK SCREENS, WATERMARK, BACKGROUND DESIGNS, HOLOGRAM AND OTHER SECURITY FEATURES NOT LISTED AND DO EXCEED DOCUMENT SECURITY INDUSTRY GUIDELINES.

For terms & conditions and to verify this report, please visit www.igi.org