



INTERNATIONAL GEMOLOGICAL INSTITUTE

ELECTRONIC COPY

LABORATORY GROWN DIAMOND REPORT

December 24, 2025
IGI Report Number **LG758510654**
Description **LABORATORY GROWN DIAMOND**
Shape and Cutting Style **PRINCESS CUT**
Measurements **3.26 X 3.23 X 2.31 MM**

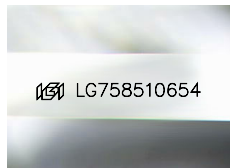
GRADING RESULTS

Carat Weight **0.21 CARAT**
Color Grade **FANCY VIVID ORANGY PINK**
Clarity Grade **SI 2**

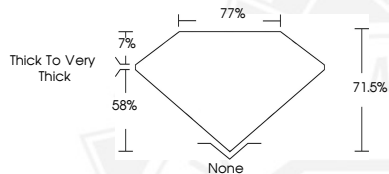
ADDITIONAL GRADING INFORMATION

Polish **VERY GOOD**
Symmetry **VERY GOOD**
Fluorescence **SLIGHT**
Inscription(s) **IGI LG758510654**

Comments: This Laboratory Grown Diamond was created by Chemical Vapor Deposition (CVD) growth process. Indications of post-growth treatment.



Sample Image Used



December 24, 2025

IGI Report Number **LG758510654**

PRINCESS CUT

LABORATORY GROWN DIAMOND

3.26 X 3.23 X 2.31 MM

Carat Weight **0.21 CARAT**
Color Grade **FANCY VIVID ORANGY PINK**

Clarity Grade **SI 2**

Polish **VERY GOOD**

Symmetry **VERY GOOD**

Fluorescence **SLIGHT**

Inscription(s) **IGI LG758510654**

Comments: This Laboratory Grown Diamond was created by Chemical Vapor Deposition (CVD) growth process. Indications of post-growth treatment.



December 24, 2025

IGI Report Number **LG758510654**

PRINCESS CUT

LABORATORY GROWN DIAMOND

3.26 X 3.23 X 2.31 MM

Carat Weight **0.21 CARAT**
Color Grade **FANCY VIVID ORANGY PINK**

Clarity Grade **SI 2**

Polish **VERY GOOD**

Symmetry **VERY GOOD**

Fluorescence **SLIGHT**

Inscription(s) **IGI LG758510654**

Comments: This Laboratory Grown Diamond was created by Chemical Vapor Deposition (CVD) growth process. Indications of post-growth treatment.



THIS DOCUMENT WAS PRODUCED WITH THE FOLLOWING SECURITY MEASURES: SPECIAL DOCUMENT PAPER, INK SCREENS, WATERMARK, BACKGROUND DESIGNS, HOLOGRAM AND OTHER SECURITY FEATURES NOT LISTED AND DO EXCEED DOCUMENT SECURITY INDUSTRY GUIDELINES.

For terms & conditions and to verify this report, please visit www.igi.org