



# INTERNATIONAL GEMOLOGICAL INSTITUTE

ELECTRONIC COPY

## LABORATORY GROWN DIAMOND REPORT

December 24, 2025  
IGI Report Number **LG758510647**  
Description **LABORATORY GROWN DIAMOND**  
Shape and Cutting Style **RECTANGULAR PRINCESS CUT**  
Measurements **4.83 X 2.68 X 1.42 MM**

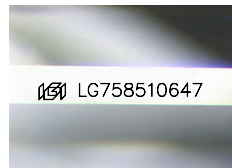
### GRADING RESULTS

Carat Weight **0.19 CARAT**  
Color Grade **FANCY INTENSE PINK**  
Clarity Grade **VS 1**

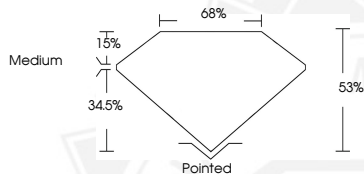
### ADDITIONAL GRADING INFORMATION

Polish **EXCELLENT**  
Symmetry **GOOD**  
Fluorescence **STRONG**  
Inscription(s) **IGI LG758510647**

Comments: This Laboratory Grown Diamond was created by Chemical Vapor Deposition (CVD) growth process. Indications of post-growth treatment.



Sample Image Used



December 24, 2025

IGI Report Number **LG758510647**  
**RECTANGULAR PRINCESS CUT**  
**LABORATORY GROWN DIAMOND**  
**4.83 X 2.68 X 1.42 MM**

Carat Weight **0.19 CARAT**  
Color Grade **FANCY INTENSE PINK**  
Clarity Grade **VS 1**  
Polish **EXCELLENT**  
Symmetry **GOOD**  
Fluorescence **STRONG**  
Inscription(s) **IGI LG758510647**

Comments: This Laboratory Grown Diamond was created by Chemical Vapor Deposition (CVD) growth process. Indications of post-growth treatment.



December 24, 2025

IGI Report Number **LG758510647**  
**RECTANGULAR PRINCESS CUT**  
**LABORATORY GROWN DIAMOND**  
**4.83 X 2.68 X 1.42 MM**

Carat Weight **0.19 CARAT**  
Color Grade **FANCY INTENSE PINK**  
Clarity Grade **VS 1**  
Polish **EXCELLENT**  
Symmetry **GOOD**  
Fluorescence **STRONG**  
Inscription(s) **IGI LG758510647**

Comments: This Laboratory Grown Diamond was created by Chemical Vapor Deposition (CVD) growth process. Indications of post-growth treatment.



THIS DOCUMENT WAS PRODUCED WITH THE FOLLOWING SECURITY MEASURES: SPECIAL DOCUMENT PAPER, INK SCREENS, WATERMARK, BACKGROUND DESIGNS, HOLOGRAM AND OTHER SECURITY FEATURES NOT LISTED AND DO EXCEED DOCUMENT SECURITY INDUSTRY GUIDELINES.

For terms & conditions and to verify this report, please visit [www.igi.org](http://www.igi.org)