



December 15, 2025

IGI Report Number **LG758509266**

**ROUND BRILLIANT
LABORATORY GROWN DIAMOND
5.16 - 5.19 X 3.18 MM**

| | |
|----------------|------------------------|
| Carat Weight | 0.54 CARAT |
| Color Grade | E |
| Clarity Grade | VVS 2 |
| Cut Grade | VERY GOOD |
| Polish | VERY GOOD |
| Symmetry | VERY GOOD |
| Fluorescence | NONE |
| Inscription(s) | IGI LG758509266 |

Comments: This Laboratory Grown Diamond was created by Chemical Vapor Deposition (CVD) growth process. Type IIa

LABORATORY GROWN DIAMOND REPORT

December 15, 2025

IGI Report Number

LG758509266

Description

LABORATORY GROWN DIAMOND

Shape and Cutting Style

ROUND BRILLIANT

Measurements

5.16 - 5.19 X 3.18 MM

GRADING RESULTS

Carat Weight

0.54 CARAT

Color Grade

E

Clarity Grade

VVS 2

Cut Grade

VERY GOOD

ADDITIONAL GRADING INFORMATION

Polish

VERY GOOD

Symmetry

VERY GOOD

Fluorescence

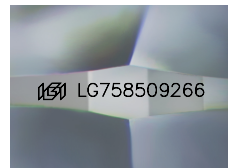
NONE

Inscription(s)

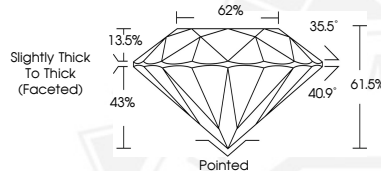
IGI LG758509266

Comments: This Laboratory Grown Diamond was created by Chemical Vapor Deposition (CVD) growth process.

Type IIa



Sample Image Used



December 15, 2025

IGI Report Number **LG758509266**

**ROUND BRILLIANT
LABORATORY GROWN DIAMOND
5.16 - 5.19 X 3.18 MM**

| | |
|----------------|------------------------|
| Carat Weight | 0.54 CARAT |
| Color Grade | E |
| Clarity Grade | VVS 2 |
| Cut Grade | VERY GOOD |
| Polish | VERY GOOD |
| Symmetry | VERY GOOD |
| Fluorescence | NONE |
| Inscription(s) | IGI LG758509266 |

Comments: This Laboratory Grown Diamond was created by Chemical Vapor Deposition (CVD) growth process. Type IIa



THIS DOCUMENT WAS PRODUCED WITH THE FOLLOWING SECURITY MEASURES: SPECIAL DOCUMENT PAPER, INK SCREENS, WATERMARK, BACKGROUND DESIGNS, HOLOGRAM AND OTHER SECURITY FEATURES NOT LISTED AND DO EXCEED DOCUMENT SECURITY INDUSTRY GUIDELINES.