



December 17, 2025

IGI Report Number **LG758509225**

**ROUND BRILLIANT
LABORATORY GROWN DIAMOND
5.15 - 5.20 X 3.17 MM**

Carat Weight	0.53 CARAT
Color Grade	E
Clarity Grade	VS 1
Cut Grade	EXCELLENT
Polish	VERY GOOD
Symmetry	EXCELLENT
Fluorescence	NONE
Inscription(s)	IGI LG758509225

Comments: This Laboratory Grown Diamond was created by Chemical Vapor Deposition (CVD) growth process. Type IIa

LABORATORY GROWN DIAMOND REPORT

December 17, 2025

IGI Report Number **LG758509225**

Description **LABORATORY GROWN DIAMOND**

Shape and Cutting Style **ROUND BRILLIANT**

Measurements **5.15 - 5.20 X 3.17 MM**

GRADING RESULTS

Carat Weight **0.53 CARAT**

Color Grade **E**

Clarity Grade **VS 1**

Cut Grade **EXCELLENT**

ADDITIONAL GRADING INFORMATION

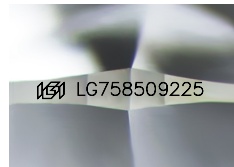
Polish **VERY GOOD**

Symmetry **EXCELLENT**

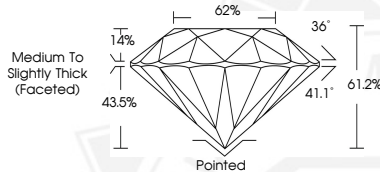
Fluorescence **NONE**

Inscription(s) **IGI LG758509225**

Comments: This Laboratory Grown Diamond was created by Chemical Vapor Deposition (CVD) growth process. Type IIa



Sample Image Used



December 17, 2025

IGI Report Number **LG758509225**

**ROUND BRILLIANT
LABORATORY GROWN DIAMOND
5.15 - 5.20 X 3.17 MM**

Carat Weight	0.53 CARAT
Color Grade	E
Clarity Grade	VS 1
Cut Grade	EXCELLENT
Polish	VERY GOOD
Symmetry	EXCELLENT
Fluorescence	NONE
Inscription(s)	IGI LG758509225

Comments: This Laboratory Grown Diamond was created by Chemical Vapor Deposition (CVD) growth process. Type IIa



THIS DOCUMENT WAS PRODUCED WITH THE FOLLOWING SECURITY MEASURES: SPECIAL DOCUMENT PAPER, INK SCREENS, WATERMARK, BACKGROUND DESIGNS, HOLOGRAM AND OTHER SECURITY FEATURES NOT LISTED AND DO EXCEED DOCUMENT SECURITY INDUSTRY GUIDELINES.