

ELECTRONIC COPY

LABORATORY GROWN DIAMOND REPORT

December 17, 2025	
IGI Report Number	LG758508146
Description	LABORATORY GROWN DIAMOND
Shape and Cutting Style	ROUND BRILLIANT
Measurements	6.60 - 6.64 X 3.96 MM

GRADING RESULTS

Carat Weight	1.07 CARAT
Color Grade	D
Clarity Grade	VS 1
Cut Grade	IDEAL

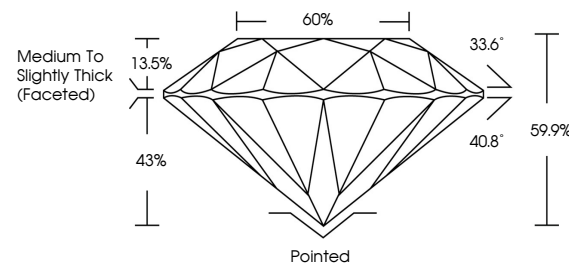
ADDITIONAL GRADING INFORMATION

Polish	EXCELLENT
Symmetry	EXCELLENT
Fluorescence	NONE
Inscription(s)	 LG758508146

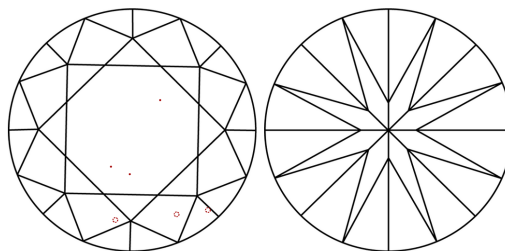
Comments: This Laboratory Grown Diamond was created by Chemical Vapor Deposition (CVD) growth process.
Type IIa

LG758508146
Report verification at igi.org

PROPORTIONS

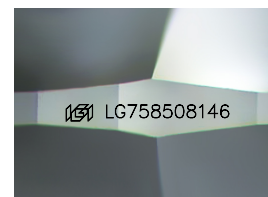


CLARITY CHARACTERISTICS



KEY TO SYMBOLS

Red symbols indicate internal characteristics.
Green symbols indicate external characteristics.



Sample Image Used

COLOR

D E F G H I J Faint Very Light Light

CLARITY

FL	IF	VVS ¹⁻²	VS ¹⁻²	SI ¹⁻²	I ¹⁻³
Flawless	Internally Flawless	Very Very Slightly Included	Very Slightly Included	Slightly Included	Included

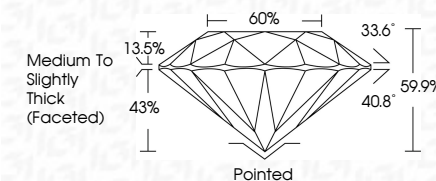
LABORATORY GROWN DIAMOND REPORT



December 17, 2025	
IGI Report Number	LG758508146
Description	LABORATORY GROWN DIAMOND
Shape and Cutting Style	ROUND BRILLIANT
Measurements	6.60 - 6.64 X 3.96 MM

GRADING RESULTS

Carat Weight	1.07 CARAT
Color Grade	D
Clarity Grade	VS 1
Cut Grade	IDEAL



ADDITIONAL GRADING INFORMATION

Polish	EXCELLENT
Symmetry	EXCELLENT
Fluorescence	NONE
Inscription(s)	 LG758508146
Comments: This Laboratory Grown Diamond was created by Chemical Vapor Deposition (CVD) growth process.	
Type IIa	



© IGI 2020, International Gemological Institute

FD - 10 20

December 17, 2025	Color Grade	Carat Weight	Medium Thick	691	Comments: This is a laboratory grown diamond certified by Chemical Vapor (CVD) growth process. Type IIA
GI Report No. G3758091.146	Clarity Grade	Color Grade			
ROUND BRILLIANT	Cut Grade	Fluorescence			
6.50 - 6.64 X 3.96 MM	Depth	Inscriptions(s)			
	Table				
	Girdle				
			Culet		
			Polish		
			Symmetry		