



LABORATORY GROWN DIAMOND REPORT

December 20, 2025
 IGI Report Number **LG758504583**
 Description **LABORATORY GROWN DIAMOND**
 Shape and Cutting Style **PEAR BRILLIANT**
 Measurements **6.77 X 4.22 X 2.50 MM**

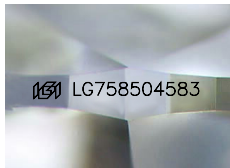
GRADING RESULTS

Carat Weight **0.42 CARAT**
 Color Grade **G**
 Clarity Grade **VVS 2**

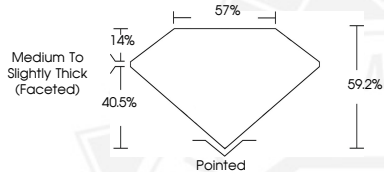
ADDITIONAL GRADING INFORMATION

Polish **VERY GOOD**
 Symmetry **VERY GOOD**
 Fluorescence **NONE**
 Inscription(s) **IGI LG758504583**

Comments: This Laboratory Grown Diamond was created by Chemical Vapor Deposition (CVD) growth process. Type IIa



Sample Image Used



December 20, 2025
 IGI Report Number **LG758504583**
PEAR BRILLIANT
LABORATORY GROWN DIAMOND
6.77 X 4.22 X 2.50 MM
 Carat Weight **0.42 CARAT**
 Color Grade **G**
 Clarity Grade **VVS 2**
 Polish **VERY GOOD**
 Symmetry **VERY GOOD**
 Fluorescence **NONE**
 Inscription(s) **IGI LG758504583**

Comments: This Laboratory Grown Diamond was created by Chemical Vapor Deposition (CVD) growth process. Type IIa



December 20, 2025
 IGI Report Number **LG758504583**
PEAR BRILLIANT
LABORATORY GROWN DIAMOND
6.77 X 4.22 X 2.50 MM
 Carat Weight **0.42 CARAT**
 Color Grade **G**
 Clarity Grade **VVS 2**
 Polish **VERY GOOD**
 Symmetry **VERY GOOD**
 Fluorescence **NONE**
 Inscription(s) **IGI LG758504583**

Comments: This Laboratory Grown Diamond was created by Chemical Vapor Deposition (CVD) growth process. Type IIa

THIS DOCUMENT WAS PRODUCED WITH THE FOLLOWING SECURITY MEASURES: SPECIAL DOCUMENT PAPER, INK SCREENS, WATERMARK, BACKGROUND DESIGNS, HOLOGRAM AND OTHER SECURITY FEATURES NOT LISTED AND DO EXCEED DOCUMENT SECURITY INDUSTRY GUIDELINES.