

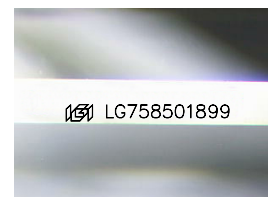
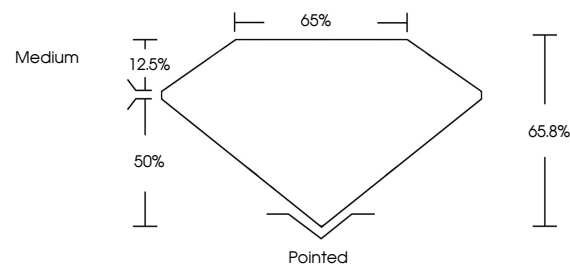


**ELECTRONIC COPY**

## LABORATORY GROWN DIAMOND REPORT

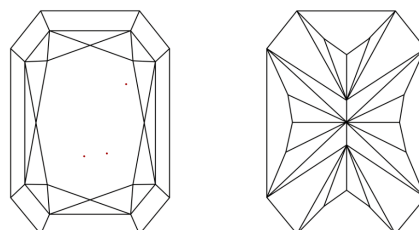
LG758501899  
Report verification at [igi.org](https://igi.org)

## PROPORTIONS



Sample Image Used

## CLARITY CHARACTERISTICS



### KEY TO SYMBOLS

Red symbols indicate internal characteristics.  
Green symbols indicate external characteristics.

## COLOR

D E F G H I J Faint Very Light Light

## CLARITY

FL	IF	VVS <sup>1-2</sup>	VS <sup>1-2</sup>	SI <sup>1-2</sup>	I <sup>1-3</sup>
Flawless	Internally Flawless	Very Very Slightly Included	Very Slightly Included	Slightly Included	Included

## LABORATORY GROWN DIAMOND REPORT



December 22, 2025

IGI Report Number **LG758501899**Description **LABORATORY GROWN DIAMOND**

Shape and Cutting Style

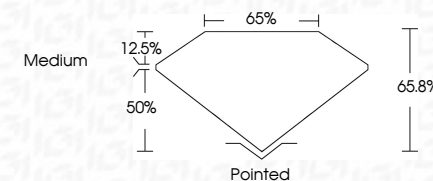
CUT CORNERED  
RECTANGULAR MODIFIED  
BRILLIANT

Measurements 10.20 X 7.02 X 4.62 MM

## GRADING RESULTS

Carat Weight 2.83 CARATS

Color Grade

Clarity Grade VVS 2

### ADDITIONAL GRADING INFORMATION

Polish **EXCELLENT**Symmetry **EXCELLENT**Fluorescence NONEInscription(s)  LG758501899

Comments: This Laboratory Grown Diamond was created by Chemical Vapor Deposition (CVD) growth process.  
Type IIa



© IGI 2020, International Gemological Institute

FD - 10 20

**www.igi.org**

THIS DOCUMENT WAS PRODUCED WITH THE FOLLOWING SECURITY MEASURES: SPECIAL DOCUMENT PAPER, INK SCREENS, WATERMARK, BACKGROUND DESIGNS, HOLOGRAM AND OTHER SECURITY FEATURES NOT LISTED AND DO EXCEED DOCUMENT SECURITY INDUSTRY GUIDELINES

December 22, 2025	
SU Report No. LG788601999	
CUT CORNERED RECT. MODIFIED BRILLIANT	
10.20 x 7.10 x 4.62 MM	
Carat Weight	2.83 CARATS
Color Grade	D
Clarity Grade	VVS 2
Depth	64.9%
Table	66%
Gable	Medium
Culet	Pointed
Polish	EXCELLENT
Symmetry	EXCELLENT
Fluorescence	NONE
Inscriptions(s)	LG788601999

Comments:

The Laboratory Grown Diamond was analyzed by Laser Vapor Deposition (LVD) growth process.

Type IIG