



**ELECTRONIC COPY**

LG758501703  
Report verification at igi.org



December 17, 2025

IGI Report Number **LG758501703**

Description **LABORATORY GROWN DIAMOND**

Shape and Cutting Style **CUT CORNERED  
RECTANGULAR MODIFIED  
BRILLIANT**

Measurements **9.77 X 7.25 X 4.95 MM**

**GRADING RESULTS**

Carat Weight **3.07 CARATS**

Color Grade **E**

Clarity Grade **VS 1**

December 17, 2025  
IGI Report Number **LG758501703**  
Description **LABORATORY GROWN DIAMOND**  
Shape and Cutting Style **CUT CORNERED RECTANGULAR  
MODIFIED BRILLIANT**  
Measurements **9.77 X 7.25 X 4.95 MM**

**GRADING RESULTS**

Carat Weight **3.07 CARATS**

Color Grade **E**

Clarity Grade **VS 1**

**ADDITIONAL GRADING INFORMATION**

Polish **EXCELLENT**

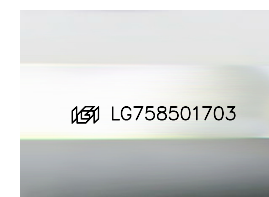
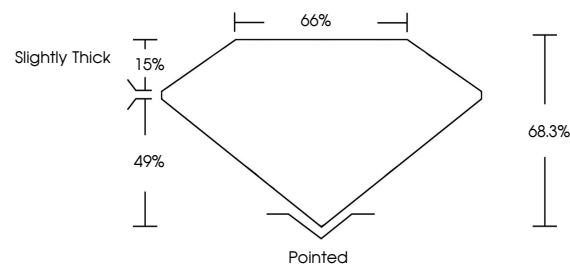
Symmetry **EXCELLENT**

Fluorescence **NONE**

Inscription(s) **IGI LG758501703**

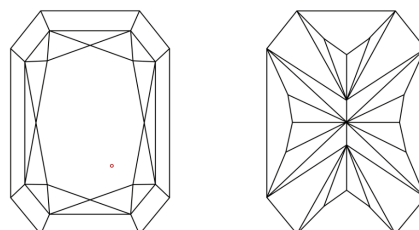
Comments: This Laboratory Grown Diamond was created by Chemical Vapor Deposition (CVD) growth process.  
Type IIa

**PROPORTIONS**



Sample Image Used

**CLARITY CHARACTERISTICS**



**KEY TO SYMBOLS**

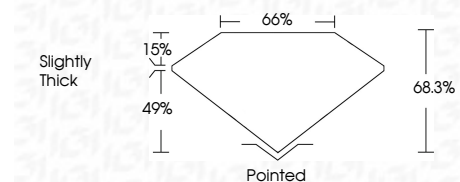
Red symbols indicate internal characteristics.  
Green symbols indicate external characteristics.

**COLOR**

D E F G H I J Faint Very Light Light

**CLARITY**

FL	IF	VS <sup>1-2</sup>	VS <sup>1-2</sup>	SI <sup>1-2</sup>	I <sup>1-3</sup>
Flawless	Internally Flawless	Very Very Slightly Included	Very Slightly Included	Slightly Included	Included



**ADDITIONAL GRADING INFORMATION**

Polish **EXCELLENT**

Symmetry **EXCELLENT**

Fluorescence **NONE**

Inscription(s) **IGI LG758501703**

Comments: This Laboratory Grown Diamond was created by Chemical Vapor Deposition (CVD) growth process.  
Type IIa



**IGI**



December 17, 2025  
IGI Report No LG758501703  
CUT CORNERED RECT. MODIFIED BRILLIANT  
3.07 CARATS E  
9.77 X 7.25 X 4.95 MM  
Color Grade E  
Clarity Grade VS 1  
Table 66.0%  
Depth 49%  
Girdle Slightly Thick  
Culet Pointed  
Polish EXCELLENT  
Symmetry EXCELLENT  
Fluorescence NONE  
Inscription(s) IGI LG758501703  
Comments: This Laboratory Grown Diamond was created by Chemical Vapor Deposition (CVD) growth process.  
Type IIa