



ELECTRONIC COPY

LABORATORY GROWN DIAMOND REPORT

December 18, 2025
IGI Report Number LG758501313
Description LABORATORY GROWN DIAMOND
Shape and Cutting Style CUT CORNERED RECTANGULAR MODIFIED BRILLIANT
Measurements 9.95 X 7.25 X 4.75 MM

GRADING RESULTS

Carat Weight 2.93 CARATS
Color Grade F
Clarity Grade VVS 2

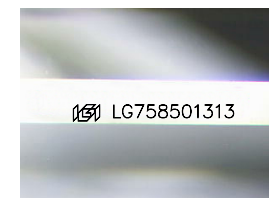
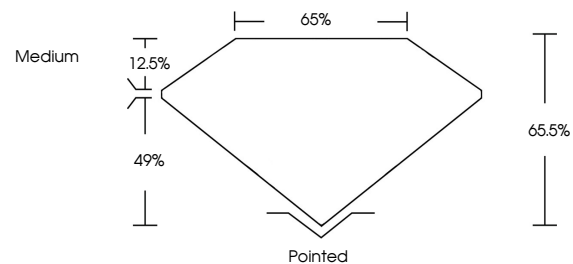
ADDITIONAL GRADING INFORMATION

Polish EXCELLENT
Symmetry EXCELLENT
Fluorescence NONE

Inscription(s) LG758501313

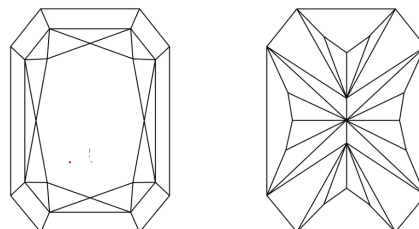
Comments: This Laboratory Grown Diamond was created by Chemical Vapor Deposition (CVD) growth process.
Type IIa

PROPORTIONS



Sample Image Used

CLARITY CHARACTERISTICS



KEY TO SYMBOLS

Red symbols indicate internal characteristics.
Green symbols indicate external characteristics.

COLOR

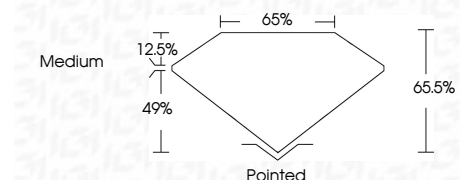
D E F G H I J Faint Very Light Light

CLARITY

FL IF VVS¹⁻² VS¹⁻² SI¹⁻² I¹⁻³
Flawless Internally Flawless Very Very Slightly Included Very Slightly Included Slightly Included Included



December 18, 2025
IGI Report Number LG758501313
Description LABORATORY GROWN DIAMOND
Shape and Cutting Style CUT CORNERED RECTANGULAR MODIFIED BRILLIANT
Measurements 9.95 X 7.25 X 4.75 MM
GRADING RESULTS
Carat Weight 2.93 CARATS
Color Grade F
Clarity Grade VVS 2



ADDITIONAL GRADING INFORMATION

Polish EXCELLENT
Symmetry EXCELLENT
Fluorescence NONE
Inscription(s) LG758501313
Comments: This Laboratory Grown Diamond was created by Chemical Vapor Deposition (CVD) growth process.
Type IIa



December 18, 2025
IGI Report No LG758501313
CUT CORNERED RECT. MODIFIED BRILLIANT
9.95 X 7.25 X 4.75 MM
2.93 CARATS
F
VVS 2
65.5%
65%
Medium
Pointed
EXCELLENT
EXCELLENT
NONE
Inscription(s) LG758501313
Comments: This Laboratory Grown Diamond was created by Chemical Vapor Deposition (CVD) growth process.
Type IIa