



ELECTRONIC COPY

LG758501158
Report verification at igi.org



December 23, 2025
IGI Report Number **LG758501158**
Description **LABORATORY GROWN DIAMOND**
Shape and Cutting Style **KITE STEP CUT**
Measurements **16.94 X 10.98 X 5.48 MM**
GRADING RESULTS
Carat Weight **5.07 CARATS**
Color Grade **FANCY VIVID BLUE**
Clarity Grade **VVS 2**

December 23, 2025
IGI Report Number **LG758501158**
Description **LABORATORY GROWN DIAMOND**
Shape and Cutting Style **KITE STEP CUT**
Measurements **16.94 X 10.98 X 5.48 MM**

GRADING RESULTS

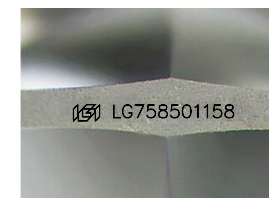
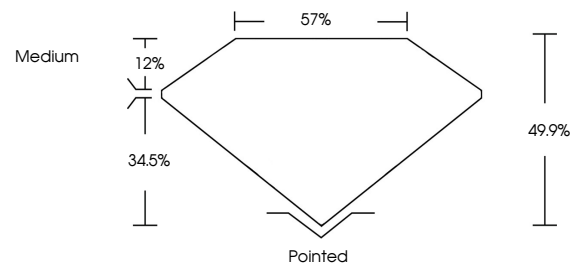
Carat Weight **5.07 CARATS**
Color Grade **FANCY VIVID BLUE**
Clarity Grade **VVS 2**

ADDITIONAL GRADING INFORMATION

Polish **EXCELLENT**
Symmetry **EXCELLENT**
Fluorescence **NONE**
Inscription(s) **IGI LG758501158**

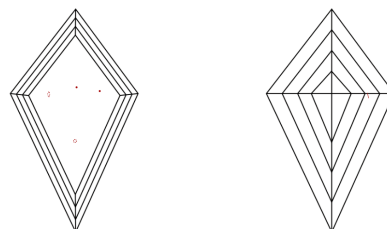
Comments: This Laboratory Grown Diamond was created by Chemical Vapor Deposition (CVD) growth process.
Indications of post-growth treatment.

PROPORTIONS



Sample Image Used

CLARITY CHARACTERISTICS



KEY TO SYMBOLS

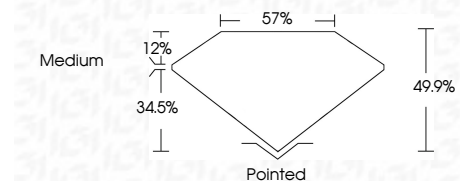
Red symbols indicate internal characteristics.
Green symbols indicate external characteristics.

COLOR

D E F G H I J Faint Very Light Light

CLARITY

FL	IF	VVS ¹⁻²	VS ¹⁻²	SI ¹⁻²	I ¹⁻³
Flawless	Internally Flawless	Very Very Slightly Included	Very Slightly Included	Slightly Included	Included



ADDITIONAL GRADING INFORMATION

Polish **EXCELLENT**
Symmetry **EXCELLENT**
Fluorescence **NONE**
Inscription(s) **IGI LG758501158**
Comments: This Laboratory Grown Diamond was created by Chemical Vapor Deposition (CVD) growth process.
Indications of post-growth treatment.



December 23, 2025
IGI Report No LG758501158
KITE STEP CUT
16.94 X 10.98 X 5.48 MM
5.07 CARATS
FANCY VIVID BLUE
VVS 2
49.9%
57%
Medium
Pointed
EXCELLENT
EXCELLENT
NONE
IGI LG758501158
Comments: This Laboratory Grown Diamond was created by Chemical Vapor Deposition (CVD) growth process.
Indications of post-growth treatment.