



ELECTRONIC COPY

LABORATORY GROWN DIAMOND REPORT

LG757539735
Report verification at igi.org

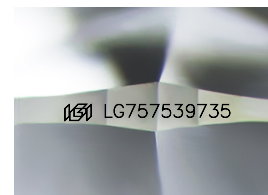
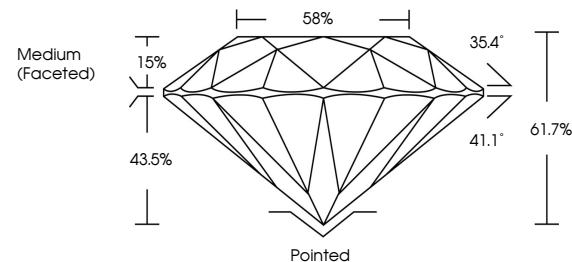
December 15, 2025	
IGI Report Number	LG757539735
Description	LABORATORY GROWN DIAMOND
Shape and Cutting Style	ROUND BRILLIANT
Measurements	8.15 - 8.17 X 5.04 MM
GRADING RESULTS	
Carat Weight	2.05 CARATS
Color Grade	F
Clarity Grade	VVS 2
Cut Grade	IDEAL

ADDITIONAL GRADING INFORMATION

Polish	EXCELLENT
Symmetry	EXCELLENT
Fluorescence	NONE
Inscription(s)	151 LG757539735

Comments: This Laboratory Grown Diamond was created by Chemical Vapor Deposition (CVD) growth process.
Type IIa

PROPORTIONS



Sample Image Used

COLOR

D E F G H I J Faint Very Light Light

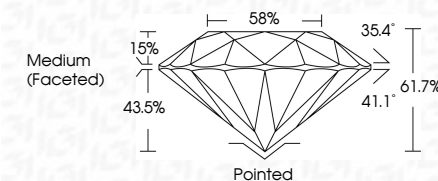
CLARITY

FL	IF	VVS ¹⁻²	VS ¹⁻²	SI ¹⁻²	I ¹⁻³
Flawless	Internally Flawless	Very Very Slightly Included	Very Slightly Included	Slightly Included	Included

LABORATORY GROWN DIAMOND REPORT



December 15, 2025	
IGI Report Number	LG757539735
Description	LABORATORY GROWN DIAMOND
Shape and Cutting Style	ROUND BRILLIANT
Measurements	8.15 - 8.17 X 5.04 MM
GRADING RESULTS	
Carat Weight	2.05 CARATS
Color Grade	F
Clarity Grade	VVS 2
Cut Grade	IDEAL



ADDITIONAL GRADING INFORMATION

Polish	EXCELLENT
Symmetry	EXCELLENT
Fluorescence	NONE
Inscription(s)	LG LG757539735
<p>Comments: This Laboratory Grown Diamond was created by Chemical Vapor Deposition (CVD) growth process.</p> <p>Type IIa</p>	



© IGI 2020, International Gemological Institute

FD - 10 20



THIS DOCUMENT WAS PRODUCED WITH THE FOLLOWING SECURITY MEASURES: SPECIAL DOCUMENT PAPER, INK SCREENS, WATERMARK, BACKGROUND DESIGNS, HOLOGRAM AND OTHER SECURITY FEATURES NOT LISTED AND DO EXCEED DOCUMENT SECURITY INDUSTRY GUIDELINES

www.igi.org

December 15, 2025
 IGI Report No LG757539735
 ROUND BRILLIANT

ROUND BRILLIANT	
3.15 - 3.17 X 5.04 MM	
Carat Weight	2.05 CARATS
Color Grade	F
Clarity Grade	VVS 2
Cut Grade	IDEAL
Depth	61.7%
Table	58%
Girdle	Medium (Faceted)

Pointed	EXCELLENT	EXCELLENT	NONE
Culet			
Polish			
Symmetry			
Fluorescence			
Coloration(c)			

Comments:
This Laboratory Grown Diamond was created by Chemical Vapor Deposition (CVD) growth process.