

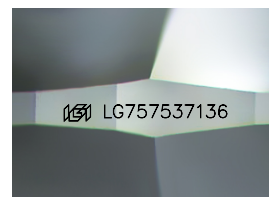
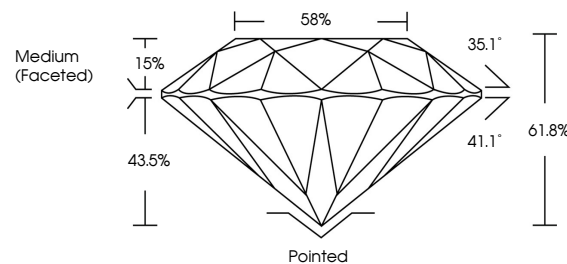


ELECTRONIC COPY

LABORATORY GROWN DIAMOND REPORT

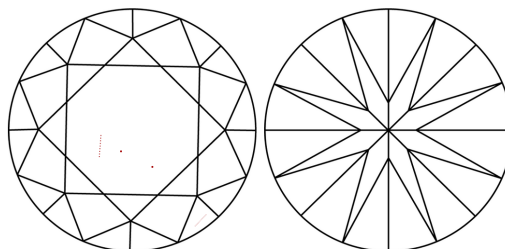
LG757537136
Report verification at lgi.org

PROPORTIONS



Sample Image Used

CLARITY CHARACTERISTICS



KEY TO SYMBOLS

Red symbols indicate internal characteristics.
Green symbols indicate external characteristics.



www.igi.org

LABORATORY GROWN DIAMOND REPORT



December 17, 2025

IGI Report Number **LG757537136**Description **LABORATORY GROWN DIAMOND**Shape and Cutting Style **ROUND BRILLIANT**

Measurements 6.49 - 6.52 X 4.03 MM

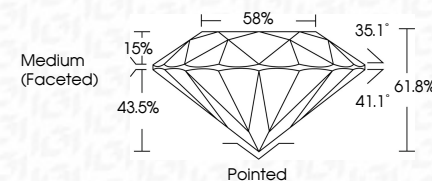
GRADING RESULTS

Carat Weight 1.04 CARAT

Color Grade

Clarity Grade VS 1

Cut Grade **IDEAL**



ADDITIONAL GRADING INFORMATION

Polish **EXCELLENT**Symmetry **EXCELLENT**Fluorescence **NONE**Inscription(s) LG757537136

Comments: HEARTS & ARROWS

This Laboratory Grown Diamond was created by Chemical Vapor Deposition (CVD) growth process.
Type IIa



IG

© IGI 2020, International Gemological Institute

FD - 10 20



THIS DOCUMENT WAS PRODUCED WITH THE FOLLOWING SECURITY MEASURES: SPECIAL DOCUMENT PAPER, INK SCREENS, WATERMARK, BACKGROUND DESIGNS, HOLOGRAM AND OTHER SECURITY FEATURES NOT LISTED AND DO EXCEED DOCUMENT SECURITY INDUSTRY GUIDELINES

December 17, 2025
IGI Report No LG757537136
ROUND BRILLIANT

| | |
|------------------------------|-------------------|
| 6.49 - 6.52 X 4.03 MM | 1.04 CARAT |
| Carat Weight | VS 1 |
| Color Grade | IDEAL |
| Clarity Grade | 61.8% |
| Cut Grade | 59% |
| Depth | Medium (Faceted) |
| Table | |
| Grille | |

| | Pointed | EXCELLENT | EXCELLENT | NONE |
|------------------|---------|-----------|-----------|------|
| Culet | | | | |
| Polish | | | | |
| Symmetry | | | | |
| Fluorescence | | | | |
| certification(s) | | | | |

Comments:
HEARTS & ARROWS
This Laboratory Grown Diamond was
created by Chemical Vapor Deposition
(CVD) growth process.