



ELECTRONIC COPY

LABORATORY GROWN DIAMOND REPORT

| | |
|-------------------------|--------------------------|
| January 9, 2026 | |
| IGI Report Number | LG757534872 |
| Description | LABORATORY GROWN DIAMOND |
| Shape and Cutting Style | ROUND BRILLIANT |
| Measurements | 9.76 - 9.79 X 6.06 MM |

GRADING RESULTS

| | |
|---------------|-------------|
| Carat Weight | 3.59 CARATS |
| Color Grade | E |
| Clarity Grade | VS 1 |
| Cut Grade | IDEAL |

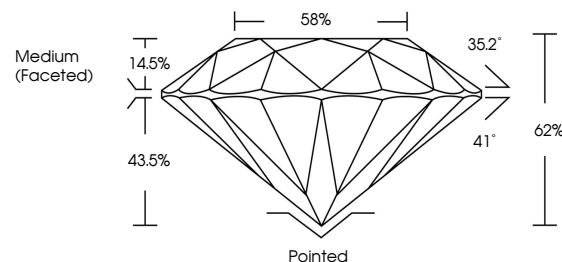
ADDITIONAL GRADING INFORMATION

| | |
|----------------|-----------------|
| Polish | EXCELLENT |
| Symmetry | EXCELLENT |
| Fluorescence | NONE |
| Inscription(s) | 151 LG757534872 |

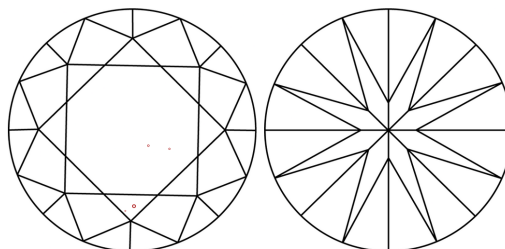
Comments: This Laboratory Grown Diamond was created by Chemical Vapor Deposition (CVD) growth process.
Type IIa

LG757534872
Report verification at lgi.org

PROPORTIONS

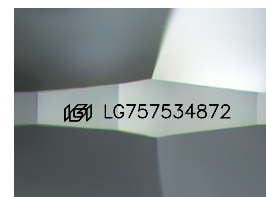


CLARITY CHARACTERISTICS



KEY TO SYMBOLS

Red symbols indicate internal characteristics.
Green symbols indicate external characteristics.



Sample Image Used

COLOR

D E F G H I J Faint Very Light Light

CLARITY

| FL | IF | VVS ¹⁻² | VS ¹⁻² | SI ¹⁻² | I ¹⁻³ |
|----------|---------------------|-----------------------------|------------------------|-------------------|------------------|
| Flawless | Internally Flawless | Very Very Slightly Included | Very Slightly Included | Slightly Included | Included |

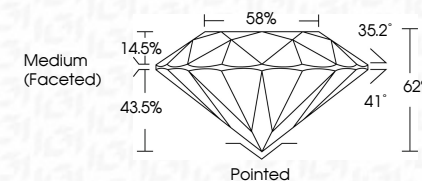
LABORATORY GROWN DIAMOND REPORT



| | |
|-------------------------|--------------------------|
| January 9, 2026 | |
| IGI Report Number | LG757534872 |
| Description | LABORATORY GROWN DIAMOND |
| Shape and Cutting Style | ROUND BRILLIANT |
| Measurements | 9.76 - 9.79 X 6.06 MM |

GRADING RESULTS

| | |
|---------------|-------------|
| Carat Weight | 3.59 CARATS |
| Color Grade | E |
| Clarity Grade | VS 1 |
| Cut Grade | IDEAL |



ADDITIONAL GRADING INFORMATION

| | |
|--|----------------------------|
| Polish | EXCELLENT |
| Symmetry | EXCELLENT |
| Fluorescence | NONE |
| Inscription(s) | (G) LG757534872 |
| Comments: This Laboratory Grown Diamond was created by Chemical Vapor Deposition (CVD) growth process. | |
| Type IIa | |



© IGI 2020, International Gemological Institute

FD - 10 20



THIS DOCUMENT WAS PRODUCED WITH THE FOLLOWING SECURITY MEASURES: SPECIAL DOCUMENT PAPER, INK SCREENS, WATERMARK, BACKGROUND DESIGNS, HOLOGRAM AND OTHER SECURITY FEATURES NOT LISTED AND DO EXCEED DOCUMENT SECURITY INDUSTRY GUIDELINE

www.igi.org

January 9, 2026
GI Report No LG757534872
ROUND BRILLIANT

| | |
|---------------|------------------|
| Carat Weight | 3.69 CARATS |
| Color Grade | V8 1 |
| Clarity Grade | IDEAL |
| Cut Grade | 66% |
| Depth | 58% |
| Table | Medium (Faceted) |
| Girdle | |
| Culet | Pointed |
| Polish | EXCELLENT |
| Symmetry | EXCELLENT |
| Fluorescence | NONE |

Comments:
This Laboratory Grown Diamond was
created by Chemical Vapor Deposition
(CVD) growth process.